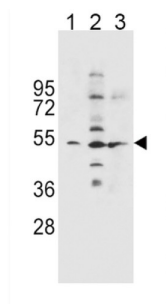
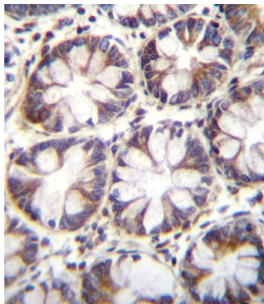
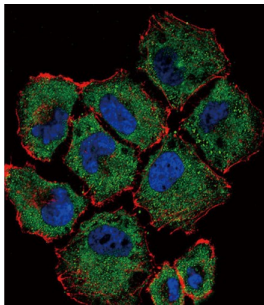


SLC36A1 Antibody

Catalogue No.: abx026632



This gene encodes a member of the eukaryote-specific amino acid/auxin permease (AAP) 1 transporter family. The encoded protein functions as a proton-dependent, small amino acid transporter. This gene is clustered with related family members on chromosome 5q33.1.

Target: SLC36A1

Clonality: Polyclonal

Reactivity: Human

Tested Applications: ELISA, WB, IHC, IF/ICC, FCM

Host: Rabbit

Recommended dilutions: WB: 1/1000, IHC-P: 1/10 - 1/50, IF/ICC: 1/10 - 1/50, FCM: 1/10 - 1/50. Not tested in IHC-F. Optimal dilutions/concentrations should be determined by the end user.

Datasheet

Version: 3.0.0
Revision date: 05 Mar 2025



Conjugation:	Unconjugated
Immunogen:	KLH-conjugated synthetic peptide between 1-30 amino acids from the N-terminal region of human SLC36A1.
Isotype:	IgG
Form:	Liquid
Purification:	Purified through a protein A column, followed by peptide affinity purification.
Storage:	Aliquot and store at -20°C. Avoid repeated freeze/thaw cycles.
UniProt Primary AC:	Q7Z2H8 (UniProt , ExPASy)
Gene Symbol:	SLC36A1
KEGG:	hsa:206358
String:	9606.ENSP00000243389
Molecular Weight:	Calculated MW: 53.1 kDa
Buffer:	PBS containing 0.09% sodium azide.
Specificity:	Predicted to react with Mouse and Rat SLC36A1.
Note:	THIS PRODUCT IS FOR RESEARCH USE ONLY. NOT FOR USE IN DIAGNOSTIC, THERAPEUTIC OR COSMETIC PROCEDURES. NOT FOR HUMAN OR ANIMAL CONSUMPTION.