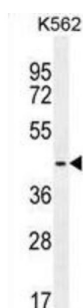
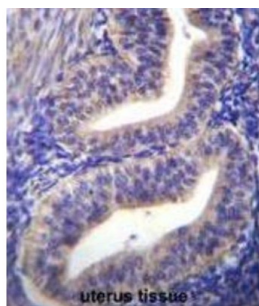
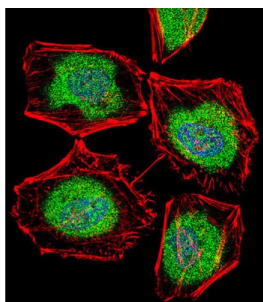


TATA-Box Binding Protein Like 2 (TBPL2) Antibody

Catalogue No.: abx026633



TBPL2 is a transcription factor required in complex with TAF3 for the differentiation of myoblasts into myocytes. The complex replaces TFIID at specific promoters at an early stage in the differentiation process (By similarity).

Target: TATA-Box Binding Protein Like 2 (TBPL2)

Clonality: Polyclonal

Reactivity: Human

Tested Applications: ELISA, WB, IHC, IF/ICC

Host: Rabbit

Recommended dilutions: WB: 1/1000, IHC-P: 1/10 - 1/50, IF/ICC: 1/10 - 1/50. Not tested in IHC-F. Optimal dilutions/concentrations should be determined by the end user.

Datasheet

Version: 4.0.0
Revision date: 30 Sep 2025



Conjugation:	Unconjugated
Immunogen:	KLH-conjugated synthetic peptide between 12-39 amino acids from the N-terminal region of human TBPL2.
Isotype:	IgG
Form:	Liquid
Purification:	Purified through a protein A column, followed by peptide affinity purification.
Storage:	Aliquot and store at -20°C. Avoid repeated freeze/thaw cycles.
UniProt Primary AC:	Q6SJ96 (UniProt , ExPASy)
Gene Symbol:	TBPL2
KEGG:	hsa:387332
String:	9606.ENSP00000247219
Molecular Weight:	Calculated MW: 41.5 kDa
Buffer:	PBS containing 0.09% sodium azide.
Note:	THIS PRODUCT IS FOR RESEARCH USE ONLY. NOT FOR USE IN DIAGNOSTIC, THERAPEUTIC OR COSMETIC PROCEDURES. NOT FOR HUMAN OR ANIMAL CONSUMPTION.