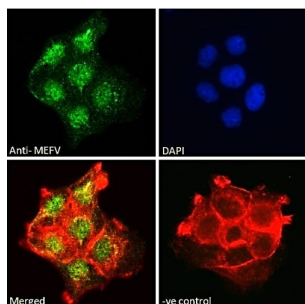
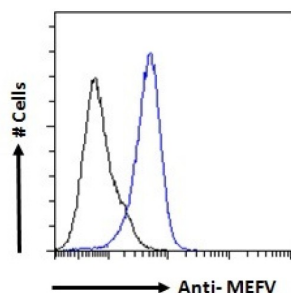


## Pyrin (MEFV) Antibody

Catalogue No.: abx432959



Immunofluorescence analysis of paraformaldehyde fixed A431 cells, permeabilized with 0.15% Triton. Primary incubation 1hr (10 µg/ml) followed by AF488 secondary antibody (2 µg/ml), showing nuclear staining. Actin filaments were stained with phalloidin (red) and the nuclear stain is DAPI (blue). Negative control: Unimmunized goat IgG (10 µg/ml) followed by AF488 secondary antibody (2 µg/ml).



Flow cytometric analysis of paraformaldehyde fixed A431 cells (blue line), permeabilized with 0.5% Triton. Primary incubation 1hr (10 µg/ml) followed by AF488 secondary antibody (1 µg/ml). IgG control: Unimmunized goat IgG (black line) followed by AF488 secondary antibody.

MEFV Antibody is a Goat Polyclonal antibody against MEFV.

**Target:** Pyrin (MEFV)

**Clonality:** Polyclonal

**Reactivity:** Human

**Tested Applications:** P-ELISA, IF/ICC, FCM

**Host:** Goat

**Recommended dilutions:** P-ELISA: 1/8000. Optimal dilutions/concentrations should be determined by the end user.

**Conjugation:** Unconjugated

**Immunogen:** [abx269732](#) - Internal region: C-EHLKKLRKSGEEQ

**Isotype:** IgG

**Form:** Liquid

**Purification:** Purified from goat serum by ammonium sulphate precipitation followed by antigen affinity chromatography using the immunizing peptide.

# Datasheet

Version: 3.0.0

Revision date: 13 Aug 2025



<b>Storage:</b>	Aliquot and store at -20°C. Avoid repeated freeze/thaw cycles.
<b>Gene Symbol:</b>	MEFV
<b>GeneID:</b>	<a href="#">4210</a>
<b>NCBI Accession:</b>	NP_000234.1, NP_001185465.1
<b>Buffer:</b>	Tris saline, pH 7.3, containing 0.02% sodium azide and 0.5% bovine serum albumin.
<b>Concentration:</b>	0.5 mg/ml
<b>Note:</b>	THIS PRODUCT IS FOR RESEARCH USE ONLY. NOT FOR USE IN DIAGNOSTIC, THERAPEUTIC OR COSMETIC PROCEDURES. NOT FOR HUMAN OR ANIMAL CONSUMPTION.

For Reference Only