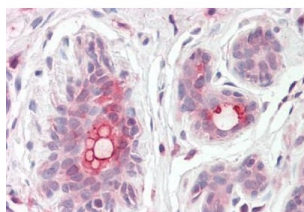


Migration Inhibitory Factor-Related Protein 8 (MRP8) Antibody

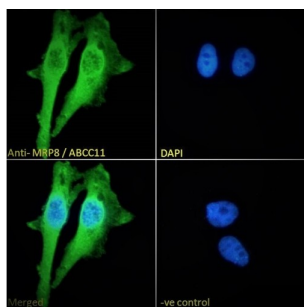
Catalogue No.: abx430267



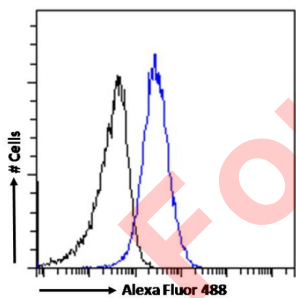
abx430267 (0.5 µg/ml) staining of Human Testes lysate (35 µg protein in RIPA buffer). Detected by chemiluminescence.



abx430267 (3.75 µg/ml) staining of paraffin embedded Human Breast. Steamed antigen retrieval with citrate buffer pH 6, AP-staining.



Immunofluorescence analysis of paraformaldehyde fixed HeLa cells, permeabilized with 0.15% Triton. Primary incubation 1hr (10 µg/ml) followed by AF488 secondary antibody (2 µg/ml), showing membrane and cytoplasmic staining. The nuclear stain is DAPI (blue). Negative control: Unimmunized goat IgG (10 µg/ml) followed by AF488 secondary antibody (2 µg/ml).



Flow cytometry analysis of paraformaldehyde fixed HeLa cells (blue line), permeabilized with 0.5% Triton. Primary incubation 1hr (10 µg/ml) followed by AF488 secondary antibody (1 µg/ml). IgG control: Unimmunized goat IgG (black line) followed by AF488 secondary antibody.

MRP8 Antibody is a Goat Polyclonal antibody against MRP8.

Target: Migration Inhibitory Factor-Related Protein 8 (MRP8)

Clonality: Polyclonal

Reactivity: Human

Datasheet

Version: 1.0.0
Revision date: 23 Mar 2025



Tested Applications: P-ELISA, WB, IHC, IF/ICC, FCM

Host: Goat

Recommended dilutions: P-ELISA: 1/32000. Optimal dilutions/concentrations should be determined by the end user.

Conjugation: Unconjugated

Immunogen: [abx615603](#) - Internal region (near C-Terminus): C-KVVEFDRPEVLRK

Isotype: IgG

Form: Liquid

Purification: Purified from goat serum by ammonium sulphate precipitation followed by antigen affinity chromatography using the immunizing peptide.

Storage: Aliquot and store at -20°C. Avoid repeated freeze/thaw cycles.

Gene Symbol: ABCC11

GeneID: [85320](#)

NCBI Accession: NP_115972.2, NP_660187.1, NP_001357425.1

Buffer: Tris saline, pH 7.3, containing 0.02% sodium azide and 0.5% bovine serum albumin.

Concentration: 0.5 mg/ml

Note: THIS PRODUCT IS FOR RESEARCH USE ONLY. NOT FOR USE IN DIAGNOSTIC, THERAPEUTIC OR COSMETIC PROCEDURES. NOT FOR HUMAN OR ANIMAL CONSUMPTION.