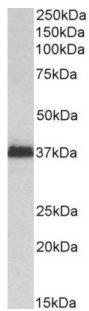
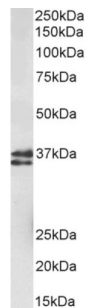


## RNA-Binding Protein Musashi Homolog 2 (MSI2) Antibody

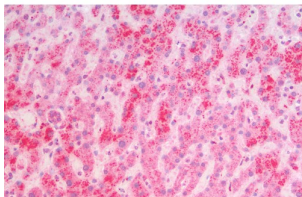
Catalogue No.: abx430172



abx430172 (2 µg/ml) staining of Kelly lysate (35 µg protein in RIPA buffer). Primary incubation was 1 hour. Detected by chemiluminescence.



abx430172 (1 µg/ml) staining of fetal Mouse Brain lysate (35 µg protein in RIPA buffer). Primary incubation was 1 hour. Detected by chemiluminescence.



abx430172 (5 µg/ml) staining of paraffin embedded Human Liver. Steamed antigen retrieval with citrate buffer pH 6, AP-staining.

MSI2 Antibody is a Goat Polyclonal antibody against MSI2.

**Target:** RNA-Binding Protein Musashi Homolog 2 (MSI2)

**Clonality:** Polyclonal

**Reactivity:** Human, Mouse

**Tested Applications:** P-ELISA, WB, IHC

**Host:** Goat

**Recommended dilutions:** P-ELISA: 1/128000. Optimal dilutions/concentrations should be determined by the end user.

**Conjugation:** Unconjugated

# Datasheet

Version: 3.0.0  
Revision date: 27 Jul 2025



<b>Immunogen:</b>	<a href="#">abx617235</a> - N-Terminus: QGTSGSANDSQHD-C
<b>Isotype:</b>	IgG
<b>Form:</b>	Liquid
<b>Purification:</b>	Purified from goat serum by ammonium sulphate precipitation followed by antigen affinity chromatography using the immunizing peptide.
<b>Storage:</b>	Aliquot and store at -20°C. Avoid repeated freeze/thaw cycles.
<b>Gene Symbol:</b>	MSI2
<b>GeneID:</b>	<a href="#">124540</a> <a href="#">76626</a>
<b>NCBI Accession:</b>	NP_620412.1
<b>Buffer:</b>	Tris saline, pH 7.3, containing 0.02% sodium azide and 0.5% bovine serum albumin.
<b>Concentration:</b>	0.5 mg/ml
<b>Note:</b>	THIS PRODUCT IS FOR RESEARCH USE ONLY. NOT FOR USE IN DIAGNOSTIC, THERAPEUTIC OR COSMETIC PROCEDURES. NOT FOR HUMAN OR ANIMAL CONSUMPTION.

For Reference Only