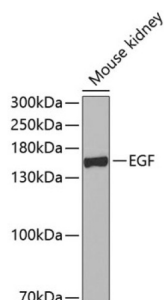


## Pro-Epidermal Growth Factor (EGF) Antibody

Catalogue No.: abx002067



Western blot analysis of extracts of Mouse kidney using EGF Antibody (1/50 dilution).

EGF Antibody is a Rabbit Polyclonal antibody against EGF. This gene encodes a member of the epidermal growth factor superfamily. The encoded protein is synthesized as a large precursor molecule that is proteolytically cleaved to generate the 53-amino acid epidermal growth factor peptide. This protein acts as a potent mitogenic factor that plays an important role in the growth, proliferation and differentiation of numerous cell types. This protein acts by binding the high affinity cell surface receptor, epidermal growth factor receptor. Defects in this gene are the cause of hypomagnesemia type 4. Dysregulation of this gene has been associated with the growth and progression of certain cancers. Alternate splicing results in multiple transcript variants.

<b>Target:</b>	Pro-Epidermal Growth Factor (EGF)
<b>Clonality:</b>	Polyclonal
<b>Reactivity:</b>	Human, Mouse
<b>Tested Applications:</b>	WB
<b>Host:</b>	Rabbit
<b>Recommended dilutions:</b>	WB: 1/500 - 1/2000. Optimal dilutions/concentrations should be determined by the end user.
<b>Conjugation:</b>	Unconjugated
<b>Immunogen:</b>	Recombinant protein corresponding to human EGF
<b>Isotype:</b>	IgG
<b>Form:</b>	Liquid
<b>Purification:</b>	Purified by affinity chromatography.
<b>Storage:</b>	Aliquot and store at -20°C. Avoid repeated freeze/thaw cycles.
<b>UniProt Primary AC:</b>	P01133 ( <a href="#">UniProt</a> , <a href="#">ExPASy</a> )

# Datasheet

Version: 5.0.0

Revision date: 13 Aug 2025



**Gene Symbol:** EGF

**GeneID:** [1950](#)

**NCBI Accession:** NP\_001954.2

**KEGG:** hsa:1950

**String:** [9606.ENSP00000265171](#)

**Molecular Weight:** Calculated MW: 129 kDa/133 kDa  
Observed MW: 160 kDa

**Buffer:** PBS, pH 7.3, containing 0.02% sodium azide, 50% glycerol.

**Concentration:** 1 mg/ml

**Note:** THIS PRODUCT IS FOR RESEARCH USE ONLY. NOT FOR USE IN DIAGNOSTIC, THERAPEUTIC OR COSMETIC PROCEDURES. NOT FOR HUMAN OR ANIMAL CONSUMPTION.

For Reference Only