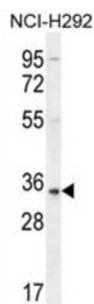


Pulmonary Surfactant-Associated Protein A2 (SFTPA2) Antibody

Catalogue No.: abx026672



This gene is one of several genes encoding pulmonary-surfactant associated proteins (SFTPA) located on chromosome 10. Mutations in this gene and a highly similar gene located nearby, which affect the highly conserved carbohydrate recognition domain, are associated with idiopathic pulmonary fibrosis. The current version of the assembly displays only a single centromeric SFTPA gene pair rather than the two gene pairs shown in the previous assembly which were thought to have resulted from a duplication.

Target: Pulmonary Surfactant-Associated Protein A2 (SFTPA2)

Clonality: Polyclonal

Reactivity: Human

Tested Applications: ELISA, WB

Host: Rabbit

Recommended dilutions: WB: 1/1000. Optimal dilutions/concentrations should be determined by the end user.

Conjugation: Unconjugated

Immunogen: KLH-conjugated synthetic peptide between 174-202 amino acids from the C-terminal region of human SFTPA2B.

Isotype: IgG

Form: Liquid

Purification: Purified through a protein A column, followed by peptide affinity purification.

Storage: Aliquot and store at -20°C. Avoid repeated freeze/thaw cycles.

UniProt Primary AC: Q8IWL1 ([UniProt](#), [ExPASy](#))

Datasheet

Version: 3.0.0

Revision date: 15 Aug 2025



Gene Symbol: SFTPA2

GeneID: [729238](#)

KEGG: hsa:729238

String: [9606.ENSP00000361400](#)

Molecular Weight: Calculated MW: 26.2 kDa

Buffer: PBS containing 0.09% sodium azide.

Note: THIS PRODUCT IS FOR RESEARCH USE ONLY. NOT FOR USE IN DIAGNOSTIC, THERAPEUTIC OR COSMETIC PROCEDURES. NOT FOR HUMAN OR ANIMAL CONSUMPTION.

For Reference Only