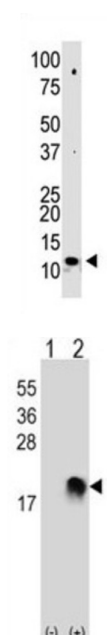


Small Ubiquitin-Related Modifier 2/3 (SUMO2/3) Antibody

Catalogue No.: abx026675



SUMO2 and SUMO3 are members of the SUMO (small ubiquitin-like modifier) protein family. This protein family functions in a manner similar to ubiquitin in that it is bound to target proteins as part of a post-translational modification system. However, unlike ubiquitin which targets proteins for degradation, this protein is involved in a variety of cellular processes, such as nuclear transport, transcriptional regulation, apoptosis, and protein stability. In vertebrates, three members of the SUMO family have been described, SUMO 1 and the functionally distinct homologues SUMO 2 and SUMO 3. SUMO modification sites present in the N terminal regions of SUMO 2 and SUMO 3 are utilized by SAE1/SAE2 (SUMO E1) and Ubc9 (SUMO E2) to form polymeric chains of SUMO 2 and SUMO 3 on protein substrates, a property not shared by SUMO 1.

Target: Small Ubiquitin-Related Modifier 2/3 (SUMO2/3)

Clonality: Polyclonal

Reactivity: Human

Tested Applications: ELISA, WB

Host: Rabbit

Recommended dilutions: WB: 1/2000. Optimal dilutions/concentrations should be determined by the end user.

Conjugation: Unconjugated

Isotype: IgG

Form: Liquid

Datasheet

Version: 3.0.0

Revision date: 22 Aug 2025



Purification:	Purified Rabbit Polyclonal Antibody.
Storage:	Aliquot and store at -20°C. Avoid repeated freeze/thaw cycles.
UniProt Primary AC:	P61956 (UniProt , ExPASy)
NCBI Accession:	NP_001005849.1, NP_008868.3
KEGG:	hsa:6613
Molecular Weight:	Calculated MW: 10.9 kDa
Note:	THIS PRODUCT IS FOR RESEARCH USE ONLY. NOT FOR USE IN DIAGNOSTIC, THERAPEUTIC OR COSMETIC PROCEDURES. NOT FOR HUMAN OR ANIMAL CONSUMPTION.

For Reference Only