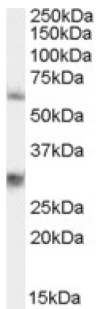


# Datasheet

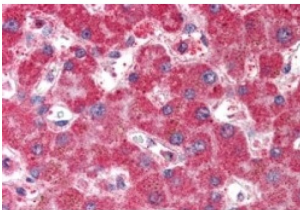
Version: 3.0.0  
Revision date: 10 Oct 2025

## PALS2 Antibody

Catalogue No.: abx430435



abx430435 staining (0.3 µg/ml) of 293 lysate (RIPA buffer, 35 µg total protein per lane). Primary incubated for 1 hour. Detected by western blot using chemiluminescence.



abx430435 (5 µg/ml) staining of paraffin embedded Human Liver. Steamed antigen retrieval with citrate buffer pH 6, AP-staining.

PALS2 Antibody is a Goat Polyclonal antibody against PALS2.

**Target:** PALS2

**Clonality:** Polyclonal

**Reactivity:** Human

**Tested Applications:** P-ELISA, WB, IHC

**Host:** Goat

**Recommended dilutions:** P-ELISA: 1/128000. Optimal dilutions/concentrations should be determined by the end user.

**Conjugation:** Unconjugated

**Immunogen:** [abx269461](#) - N-Terminus: QQVLENLTLPSS-C

**Isotype:** IgG

**Form:** Liquid

**Purification:** Purified from goat serum by ammonium sulphate precipitation followed by antigen affinity chromatography using the immunizing peptide.

# Datasheet

Version: 3.0.0  
Revision date: 10 Oct 2025



**Storage:** Aliquot and store at -20°C. Avoid repeated freeze/thaw cycles.

**Gene Symbol:** MPP6

**GeneID:** [51678](#) [56524](#)

**NCBI Accession:** NP\_057531.2

**Buffer:** Tris saline, pH 7.3, containing 0.02% sodium azide and 0.5% bovine serum albumin.

**Concentration:** 0.5 mg/ml

**Note:** THIS PRODUCT IS FOR RESEARCH USE ONLY. NOT FOR USE IN DIAGNOSTIC, THERAPEUTIC OR COSMETIC PROCEDURES. NOT FOR HUMAN OR ANIMAL CONSUMPTION.

For Reference Only