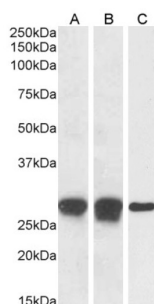
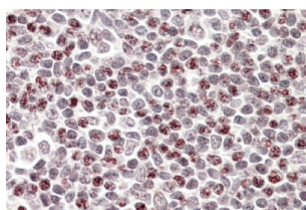


Phorbolin 1 Antibody

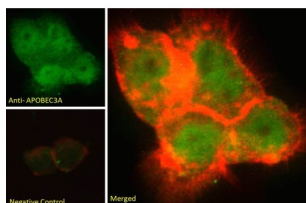
Catalogue No.: abx430930



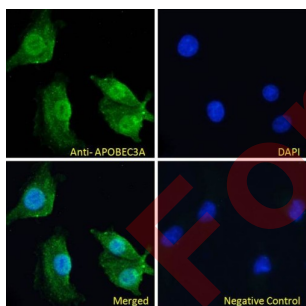
abx430930 (1 µg/ml) staining of Human Spleen (A), Tonsil (B) and (0.1 µg/ml) PBM (C) lysate (35 µg protein in RIPA buffer). Detected by chemiluminescence.



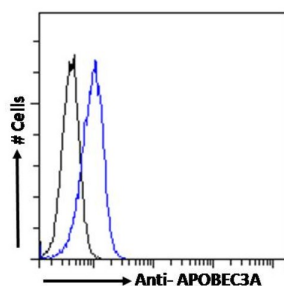
abx430930 (3.8 µg/ml) staining of paraffin embedded Human Tonsil. Steamed antigen retrieval with citrate buffer pH 6, AP-staining.



abx430930 Immunofluorescence analysis of paraformaldehyde fixed A431 cells, permeabilized with 0.15% Triton. Primary incubation 1hr (10 µg/ml) followed by AF488 secondary antibody (2 µg/ml), showing nuclear staining. Actin filaments were stained with phalloidin (red). Negative control: Unimmunized goat IgG (10 µg/ml) followed by AF488 secondary antibody (2 µg/ml).



abx430930 Immunofluorescence analysis of paraformaldehyde fixed A549 cells, permeabilized with 0.15% Triton. Primary incubation 1hr (10 µg/ml) followed by AF488 secondary antibody (2 µg/ml), showing nuclear and some cytoplasmic staining. The nuclear stain is DAPI (blue). Negative control: Unimmunized goat IgG (10 µg/ml) followed by AF488 secondary antibody (2 µg/ml).



Flow cytometry analysis of paraformaldehyde fixed Jurkat cells (blue line), permeabilized with 0.5% Triton. Primary incubation 1hr (10 µg/ml) followed by AF488 secondary antibody (1 µg/ml). IgG control: Unimmunized goat IgG (10 µg/ml) followed by AF488 secondary antibody.

Datasheet

Version: 1.0.0
Revision date: 23 May 2025



Phorbolin 1 Antibody is a Goat Polyclonal antibody against Phorbolin 1.

Target:	Phorbolin 1
Clonality:	Polyclonal
Reactivity:	Human
Tested Applications:	P-ELISA, WB, IHC, IF/ICC, FCM
Host:	Goat
Recommended dilutions:	P-ELISA: 1/8000. Optimal dilutions/concentrations should be determined by the end user.
Conjugation:	Unconjugated
Immunogen:	abx615392 - Internal region: C-TSNFNNGIGRHKTY
Isotype:	IgG
Form:	Liquid
Purification:	Purified from goat serum by ammonium sulphate precipitation followed by antigen affinity chromatography using the immunizing peptide.
Storage:	Aliquot and store at -20°C. Avoid repeated freeze/thaw cycles.
Gene Symbol:	APOBEC3A
GeneID:	200315
NCBI Accession:	NP_663745.1
Buffer:	Tris saline, pH 7.3, containing 0.02% sodium azide and 0.5% bovine serum albumin.
Concentration:	0.5 mg/ml
Note:	THIS PRODUCT IS FOR RESEARCH USE ONLY. NOT FOR USE IN DIAGNOSTIC, THERAPEUTIC OR COSMETIC PROCEDURES. NOT FOR HUMAN OR ANIMAL CONSUMPTION.