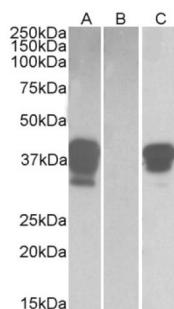
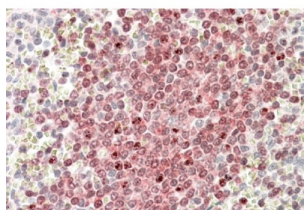


POU Class 2 Associating Factor 1 (POU2AF1) Antibody

Catalogue No.: abx433158



HEK293 lysate (10 µg protein in RIPA buffer) overexpressing Human POU2AF1 with DYKDDDDK tag probed with abx433158 (1 µg/ml) in Lane A and probed with anti-DYKDDDDK Tag (1/3000) in lane C. Mock-transfected HEK293 probed with abx433158 (1mg/ml) in Lane B. Primary incubations were for 1 hour. Detected by chemiluminescence.



In paraffin embedded Human Spleen shows nuclear staining in the germinal center with stronger nucleoli staining in some of the B cells. Recommended concentration, 3-5 µg/ml.

POU2AF1 Antibody is a Goat Polyclonal antibody against POU2AF1.

Target: POU Class 2 Associating Factor 1 (POU2AF1)

Clonality: Polyclonal

Reactivity: Human

Tested Applications: P-ELISA, WB, IHC

Host: Goat

Recommended dilutions: P-ELISA: 1/8000. Optimal dilutions/concentrations should be determined by the end user.

Conjugation: Unconjugated

Immunogen: [abx616237](#) - C-Terminus: C-DSDAYALNHTLSVE

Isotype: IgG

Form: Liquid

Purification: Purified from goat serum by ammonium sulphate precipitation followed by antigen affinity chromatography using the immunizing peptide.

Datasheet

Version: 8.0.0
Revision date: 16 Jul 2025



Storage:	Aliquot and store at -20°C. Avoid repeated freeze/thaw cycles.
Gene Symbol:	POU2AF1
GeneID:	5450
NCBI Accession:	NP_006226.2
Buffer:	Tris saline, pH 7.3, containing 0.02% sodium azide and 0.5% bovine serum albumin.
Concentration:	0.5 mg/ml
Note:	THIS PRODUCT IS FOR RESEARCH USE ONLY. NOT FOR USE IN DIAGNOSTIC, THERAPEUTIC OR COSMETIC PROCEDURES. NOT FOR HUMAN OR ANIMAL CONSUMPTION.

For Reference Only