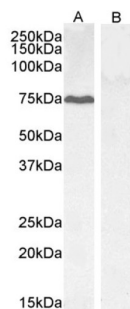
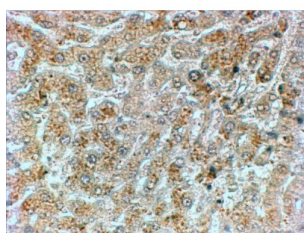


## Protein Phosphatase 1, Regulatory Subunit 15A (PPP1R15A) Antibody

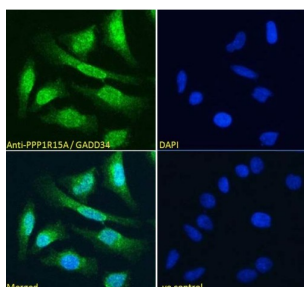
Catalogue No.: abx430859



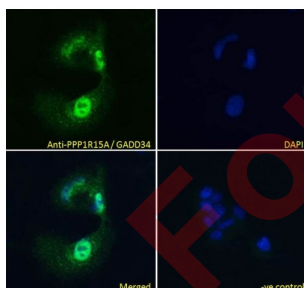
abx430859 (0.3 µg/ml) staining of HepG2 (A) and negative control KLY (B) lysate (35 µg protein in RIPA buffer) Detected by chemiluminescence.



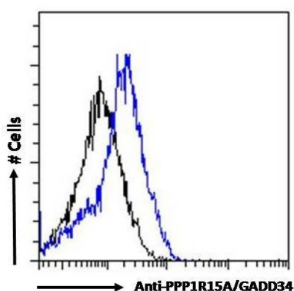
abx430859 (2 µg/ml) staining of paraaffin embedded Human Liver. Steamed antigen retrieval with citrate buffer pH 6, HRP-staining.



abx430859 Immunofluorescence analysis of paraformaldehyde fixed HeLa cells, permeabilized with 0.15% Triton. Primary incubation 1hr (10 µg/ml) followed by AF488 secondary antibody (4 µg/ml), showing strong nuclear and some cytoplasmic staining. The nuclear stain is DAPI (blue). Negative control: Unimmunized goat IgG (10 µg/ml) followed by AF488 secondary antibody (4 µg/ml).



abx430859 Immunofluorescence analysis of paraformaldehyde fixed HepG2 cells, permeabilized with 0.15% Triton. Primary incubation 1hr (10 µg/ml) followed by AF488 secondary antibody (4 µg/ml), showing strong nuclear and some cytoplasmic staining. The nuclear stain is DAPI (blue). Negative control: Unimmunized goat IgG (10 µg/ml) followed by AF488 secondary antibody (4 µg/ml).



Flow cytometry analysis of paraformaldehyde fixed HepG2 cells (blue line), permeabilized with 0.5% Triton. Primary incubation 1hr (10 µg/ml) followed by AF488 secondary antibody (0.4 µg/ml). IgG control: Unimmunized goat IgG (black line) followed by AF488 secondary antibody.

# Datasheet

Version: 3.0.0  
Revision date: 18 Jul 2025



PPP1R15A Antibody is a Goat Polyclonal antibody against PPP1R15A.

<b>Target:</b>	Protein Phosphatase 1, Regulatory Subunit 15A (PPP1R15A)
<b>Clonality:</b>	Polyclonal
<b>Reactivity:</b>	Human
<b>Tested Applications:</b>	P-ELISA, WB, IHC, IF/ICC, FCM
<b>Host:</b>	Goat
<b>Recommended dilutions:</b>	P-ELISA: 1/128000. Optimal dilutions/concentrations should be determined by the end user.
<b>Conjugation:</b>	Unconjugated
<b>Immunogen:</b>	<a href="#">abx269009</a> - C-Terminus: C-AAALDLSGRRG
<b>Isotype:</b>	IgG
<b>Form:</b>	Liquid
<b>Purification:</b>	Purified from goat serum by ammonium sulphate precipitation followed by antigen affinity chromatography using the immunizing peptide.
<b>Storage:</b>	Aliquot and store at -20°C. Avoid repeated freeze/thaw cycles.
<b>Gene Symbol:</b>	PPP1R15A
<b>GeneID:</b>	<a href="#">23645</a>
<b>NCBI Accession:</b>	NP_055145.3
<b>Buffer:</b>	Tris saline, pH 7.3, containing 0.02% sodium azide and 0.5% bovine serum albumin.
<b>Concentration:</b>	0.5 mg/ml
<b>Note:</b>	THIS PRODUCT IS FOR RESEARCH USE ONLY. NOT FOR USE IN DIAGNOSTIC, THERAPEUTIC OR COSMETIC PROCEDURES. NOT FOR HUMAN OR ANIMAL CONSUMPTION.