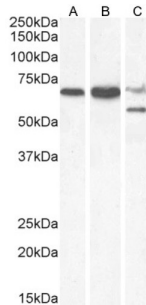


Protein Phosphatase 2 Regulatory Subunit B'Delta (PPP2R5D) Antibody

Catalogue No.: abx433169



abx433169 staining (2 µg/ml) of 293 lysate (RIPA buffer, 30 µg total protein per lane). Primary incubated for 1 hour. Detected by western blot using chemiluminescence.

PPP2R5D Antibody is a Goat Polyclonal antibody against PPP2R5D.

Target:	Protein Phosphatase 2 Regulatory Subunit B'Delta (PPP2R5D)
Clonality:	Polyclonal
Reactivity:	Human, Mouse, Rat
Tested Applications:	P-ELISA, WB, IF/ICC, FCM
Host:	Goat
Recommended dilutions:	P-ELISA: 1/20000. Optimal dilutions/concentrations should be determined by the end user.
Conjugation:	Unconjugated
Immunogen:	abx269073 - C-Terminus: C-KRAEEFLTASQEAL
Isotype:	IgG
Form:	Liquid
Purification:	Purified from goat serum by ammonium sulphate precipitation followed by antigen affinity chromatography using the immunizing peptide.
Storage:	Aliquot and store at -20°C. Avoid repeated freeze/thaw cycles.
Gene Symbol:	PPP2R5D
GeneID:	5528

Datasheet

Version: 2.0.0

Revision date: 16 Sep 2025



NCBI Accession: NP_006236.1, NP_851307.1, NP_851308.1, NP_001257405.1

Buffer: Tris saline, pH 7.3, containing 0.02% sodium azide and 0.5% bovine serum albumin.

Concentration: 0.5 mg/ml

Note: THIS PRODUCT IS FOR RESEARCH USE ONLY. NOT FOR USE IN DIAGNOSTIC, THERAPEUTIC OR COSMETIC PROCEDURES. NOT FOR HUMAN OR ANIMAL CONSUMPTION.

For Reference Only