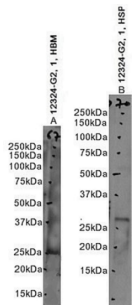
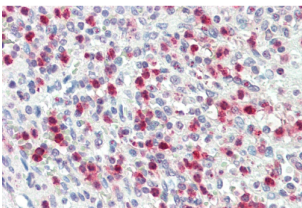


proteinase 3 Antibody

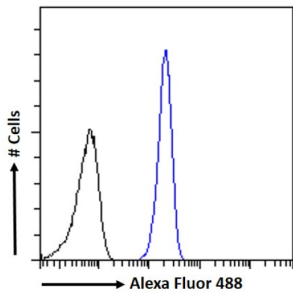
Catalogue No.: abx430941



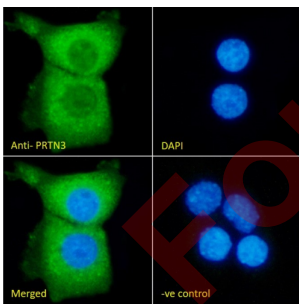
Images A and B: WB analysis using abx430941 (1 ug/ml) of Human Bone Marrow and Spleen lysate.



IHC-P analysis using abx430941 (5 ug/ml) of Human Spleen tissue.



Flow cytometry analysis of A431 cells (blue line) using abx430941 (10 ug/ml) followed by a secondary antibody conjugated to AF488 (1 ug/ml). Non-specific Goat IgG was used as a negative control followed by a secondary antibody conjugated to AF488.



IF analysis of A431 cells using abx430941 (10 ug/ml) followed by a secondary antibody conjugated to AF488 (2 ug/ml). The nuclear stain is DAPI (blue). Non-specific Goat IgG (10 ug/ml) was used as a negative control followed by a secondary antibody conjugated to AF488 (2 ug/ml).

proteinase 3 Antibody is a Goat Polyclonal antibody against proteinase 3.

Target: proteinase 3

Clonality: Polyclonal

Reactivity: Human

Datasheet

Version: 2.0.0
Revision date: 27 Sep 2025



Tested Applications: P-ELISA, WB, IHC, IF/ICC, FCM

Host: Goat

Recommended dilutions: P-ELISA: 1/8000. Optimal dilutions/concentrations should be determined by the end user.

Conjugation: Unconjugated

Immunogen: [abx617150](#) - Internal region, 88-98 AA: C-HNVRTQEPTQQ

Isotype: IgG

Form: Liquid

Purification: Purified from goat serum by ammonium sulphate precipitation followed by antigen affinity chromatography using the immunizing peptide.

Storage: Aliquot and store at -20°C. Avoid repeated freeze/thaw cycles.

Gene Symbol: PRTN3

GeneID: [5657](#)

NCBI Accession: NP_002768.3

Buffer: Tris saline, pH 7.3, containing 0.02% sodium azide and 0.5% bovine serum albumin.

Concentration: 0.5 mg/ml

Note: THIS PRODUCT IS FOR RESEARCH USE ONLY. NOT FOR USE IN DIAGNOSTIC, THERAPEUTIC OR COSMETIC PROCEDURES. NOT FOR HUMAN OR ANIMAL CONSUMPTION.