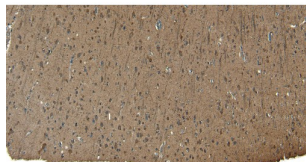
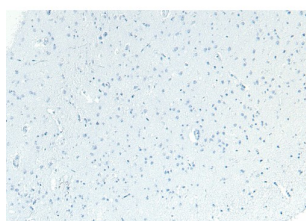


Protein Patched Homolog 1 (PTCH) Antibody

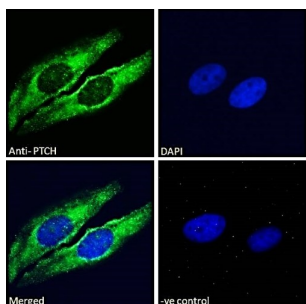
Catalogue No.: abx433194



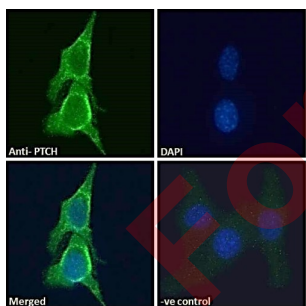
abx433194 (8 µg/ml) staining of paraffin embedded Human Cortex. Heat induced antigen retrieval with citrate buffer pH 6, HRP-staining.



Negative Control showing staining of paraffin embedded Human Cortex, with no primary antibody.



Immunofluorescence analysis of paraformaldehyde fixed HeLa cells, permeabilized with 0.15% Triton. Primary incubation 1hr (10 µg/ml) followed by AF488 secondary antibody (2 µg/ml), showing Golgi/cytoplasmic staining. The nuclear stain is DAPI (blue). Negative control: Unimmunized goat IgG (10 µg/ml) followed by AF488 secondary antibody (2 µg/ml).



Immunofluorescence analysis of paraformaldehyde fixed NIH3T3 cells, permeabilized with 0.15% Triton. Primary incubation 1hr (10 µg/ml) followed by AF488 secondary antibody (2 µg/ml), showing Golgi staining. The nuclear stain is DAPI (blue). Negative control: Unimmunized goat IgG (10 µg/ml) followed by AF488 secondary antibody (2 µg/ml).

PTCH Antibody is a Goat Polyclonal antibody against PTCH.

Target: Protein Patched Homolog 1 (PTCH)

Clonality: Polyclonal

Reactivity: Human, Mouse

Datasheet

Version: 3.0.0
Revision date: 29 Sep 2025



Tested Applications: P-ELISA, IHC, IF/ICC

Host: Goat

Recommended dilutions: P-ELISA: 1/16000. Optimal dilutions/concentrations should be determined by the end user.

Conjugation: Unconjugated

Immunogen: [abx269803](#) - C-Terminus: ELQDVECEERPR

Isotype: IgG

Form: Liquid

Purification: Purified from goat serum by ammonium sulphate precipitation followed by antigen affinity chromatography using the immunizing peptide.

Storage: Aliquot and store at -20°C. Avoid repeated freeze/thaw cycles.

Gene Symbol: PTCH1

GeneID: [5727](#)

NCBI Accession: NP_000255.1, NP_001077072.1, NP_001077071.1, NP_001077073.1, NP_001077074.1, NP_001077075.1, NP_001077076.1

Buffer: Tris saline, pH 7.3, containing 0.02% sodium azide and 0.5% bovine serum albumin.

Concentration: 0.5 mg/ml

Note: THIS PRODUCT IS FOR RESEARCH USE ONLY. NOT FOR USE IN DIAGNOSTIC, THERAPEUTIC OR COSMETIC PROCEDURES. NOT FOR HUMAN OR ANIMAL CONSUMPTION.