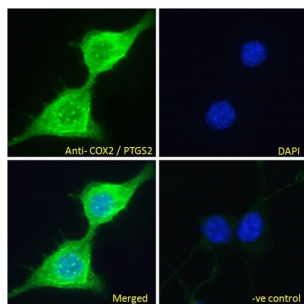


## Prostaglandin G/H Synthase 2 / COX-2 (PTGS2) Antibody

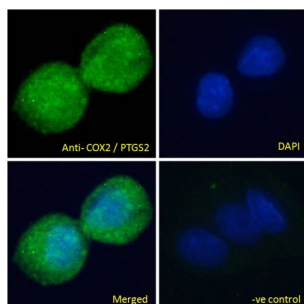
Catalogue No.: abx430212



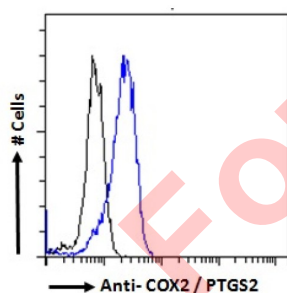
abx430212 (0.1 µg/ml) staining of A549 (A) and Daudi (B) cell lysate (35 µg protein in RIPA buffer). Detected by chemiluminescence.



abx430212 Immunofluorescence analysis of paraformaldehyde fixed NIH3T3 cells, permeabilized with 0.15% Triton. Primary incubation 1hr (10 µg/ml) followed by AF488 secondary antibody (2 µg/ml), showing cytoplasm and vesicle staining. The nuclear stain is DAPI (blue). Negative control: Unimmunized goat IgG (10 µg/ml) followed by AF488 secondary antibody (2 µg/ml).



abx430212 Immunofluorescence analysis of paraformaldehyde fixed HepG2 cells, permeabilized with 0.15% Triton. Primary incubation 1hr (10 µg/ml) followed by AF488 secondary antibody (2 µg/ml), showing cytoplasmic/vesicle staining. The nuclear stain is DAPI (blue). Negative control: Unimmunized goat IgG (10 µg/ml) followed by AF488 secondary antibody (2 µg/ml).



Flow cytometry analysis of paraformaldehyde fixed HeLa cells (blue line), permeabilized with 0.5% Triton. Primary incubation 1hr (10 µg/ml) followed by AF488 secondary antibody (2 µg/ml). IgG control: Unimmunized goat IgG (black line) followed by AF488 secondary antibody.

PTGS2 Antibody is a Goat Polyclonal antibody against PTGS2.

**Target:** Prostaglandin G/H Synthase 2 / COX-2 (PTGS2)

**Clonality:** Polyclonal

**Reactivity:** Human, Mouse

# Datasheet

Version: 3.0.0  
Revision date: 09 Oct 2025



**Tested Applications:** P-ELISA, WB, IF/ICC, FCM

**Host:** Goat

**Recommended dilutions:** P-ELISA: 1/32000. Optimal dilutions/concentrations should be determined by the end user.

**Conjugation:** Unconjugated

**Immunogen:** [abx269098](#) - C-Terminus: C-NPTVLLKERSTEL

**Isotype:** IgG

**Form:** Liquid

**Purification:** Purified from goat serum by ammonium sulphate precipitation followed by antigen affinity chromatography using the immunizing peptide.

**Storage:** Aliquot and store at -20°C. Avoid repeated freeze/thaw cycles.

**Gene Symbol:** PTGS2

**GeneID:** [5743](#)

**NCBI Accession:** NP\_000954.1

**Buffer:** Tris saline, pH 7.3, containing 0.02% sodium azide and 0.5% bovine serum albumin.

**Concentration:** 0.5 mg/ml

**Note:** THIS PRODUCT IS FOR RESEARCH USE ONLY. NOT FOR USE IN DIAGNOSTIC, THERAPEUTIC OR COSMETIC PROCEDURES. NOT FOR HUMAN OR ANIMAL CONSUMPTION.