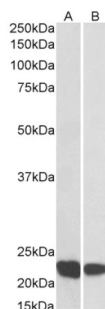
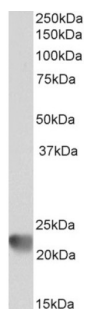


## Ras-Related C3 Botulinum Toxin Substrate 2 (RAC2) Antibody

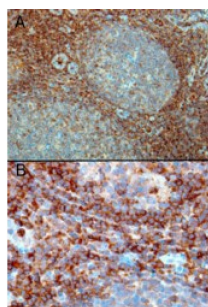
Catalogue No.: abx433210



abx433210 (0.1 µg/ml) staining of Human Thymus (A) and Tonsil (B) lysate (35 µg protein in RIPA buffer). Primary incubation was 1 hour. Detected by chemiluminescence.



abx433210 (0.3 µg/ml) staining of MOLT4 cell lysate (35 µg protein in RIPA buffer). Primary incubation was 1 hour. Detected by chemiluminescence.



abx433210 (0.3 µg/ml) staining of paraffin embedded Human Tonsil. Microwaved antigen retrieval with Tris/EDTA buffer pH9, HRP-staining. A) Strong staining in the interfollicular area and mantle zone. B) Positive cells in the interfollicular area.

RAC2 Antibody is a Goat Polyclonal antibody against RAC2.

**Target:** Ras-Related C3 Botulinum Toxin Substrate 2 (RAC2)

**Clonality:** Polyclonal

**Reactivity:** Human

**Tested Applications:** P-ELISA, WB

**Host:** Goat

**Recommended dilutions:** P-ELISA: 1/32000. Optimal dilutions/concentrations should be determined by the end user.

**Conjugation:** Unconjugated

# Datasheet

Version: 3.0.0  
Revision date: 18 Jul 2025



<b>Immunogen:</b>	<a href="#">abx269111</a> - C-Terminus: PQPTRQQKRACSL
<b>Isotype:</b>	IgG
<b>Form:</b>	Liquid
<b>Purification:</b>	Purified from goat serum by ammonium sulphate precipitation followed by antigen affinity chromatography using the immunizing peptide.
<b>Storage:</b>	Aliquot and store at -20°C. Avoid repeated freeze/thaw cycles.
<b>Gene Symbol:</b>	RAC2
<b>GeneID:</b>	<a href="#">5880</a>
<b>NCBI Accession:</b>	NP_002863.1
<b>Buffer:</b>	Tris saline, pH 7.3, containing 0.02% sodium azide and 0.5% bovine serum albumin.
<b>Concentration:</b>	0.5 mg/ml
<b>Note:</b>	THIS PRODUCT IS FOR RESEARCH USE ONLY. NOT FOR USE IN DIAGNOSTIC, THERAPEUTIC OR COSMETIC PROCEDURES. NOT FOR HUMAN OR ANIMAL CONSUMPTION.