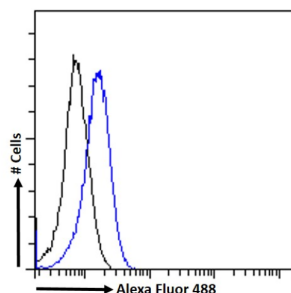
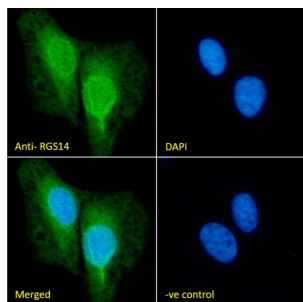


Regulator of G Protein Signaling 14 (RGS14) Antibody

Catalogue No.: abx433227



Flow cytometry analysis of HeLa cells (blue line) using abx433227 (10 ug/ml) followed by a secondary antibody conjugated to AF488 (1 ug/ml). Non-specific Goat IgG was used as a negative control followed by a secondary antibody conjugated to AF488.



IF analysis of U2OS cells using abx433227 (10 ug/ml) followed by a secondary antibody conjugated to AF488 (2 ug/ml). The nuclear stain is DAPI (blue). Non-specific Goat IgG (10 ug/ml) was used as a negative control followed by a secondary antibody conjugated to AF488 (2 ug/ml).

RGS14 Antibody is a Goat Polyclonal antibody against RGS14.

Target: Regulator of G Protein Signaling 14 (RGS14)

Clonality: Polyclonal

Reactivity: Human

Tested Applications: P-ELISA, IF/ICC, FCM

Host: Goat

Recommended dilutions: P-ELISA: 1/16000. Optimal dilutions/concentrations should be determined by the end user.

Conjugation: Unconjugated

Immunogen: [abx269524](#) - C-Terminus: C-IGGSLNSTTDSAL

Isotype: IgG

Form: Liquid

Purification: Purified from goat serum by ammonium sulphate precipitation followed by antigen affinity chromatography using the immunizing peptide.

Datasheet

Version: 3.0.0

Revision date: 19 Aug 2025



Storage:	Aliquot and store at -20°C. Avoid repeated freeze/thaw cycles.
Gene Symbol:	RGS14
GeneID:	10636
NCBI Accession:	NP_006471.2
Buffer:	Tris saline, pH 7.3, containing 0.02% sodium azide and 0.5% bovine serum albumin.
Concentration:	0.5 mg/ml
Note:	THIS PRODUCT IS FOR RESEARCH USE ONLY. NOT FOR USE IN DIAGNOSTIC, THERAPEUTIC OR COSMETIC PROCEDURES. NOT FOR HUMAN OR ANIMAL CONSUMPTION.

For Reference Only