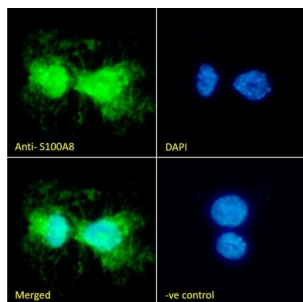
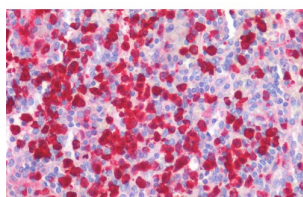


Protein S100-A8 / CAGA (S100A8) Antibody

Catalogue No.: abx433244



IF analysis of THP-1 cells using S100A8 Antibody (10ug/ml) with a secondary antibody conjugated to AF488 (2ug/ml), showing nuclear and cytoplasmic/extracellular staining. Blue DAPI was used as a nuclear stain. Non-specific Goat IgG antibody was used as a negative control (10ug/ml) with a secondary antibody conjugated to AF488 (2ug/ml).



IHC-P analysis of Human spleen tissue using S100A8 Antibody (5 µg/ml).

S100A8 Antibody is a Goat Polyclonal antibody against S100A8.

Target: Protein S100-A8 / CAGA (S100A8)

Clonality: Polyclonal

Reactivity: Human

Tested Applications: P-ELISA, IHC, IF/ICC

Host: Goat

Recommended dilutions: P-ELISA: 1/32000. Optimal dilutions/concentrations should be determined by the end user.

Conjugation: Unconjugated

Immunogen: [abx616811](#) - Internal region: C-KGADVWFKELDINT

Isotype: IgG

Form: Liquid

Purification: Purified from goat serum by ammonium sulphate precipitation followed by antigen affinity chromatography using the immunizing peptide.

Datasheet

Version: 3.0.0

Revision date: 13 Aug 2025



| | |
|------------------------|--|
| Storage: | Aliquot and store at -20°C. Avoid repeated freeze/thaw cycles. |
| Gene Symbol: | S100A8 |
| GeneID: | 6279 |
| NCBI Accession: | NP_002955.2 |
| Buffer: | Tris saline, pH 7.3, containing 0.02% sodium azide and 0.5% bovine serum albumin. |
| Concentration: | 0.5 mg/ml |
| Note: | THIS PRODUCT IS FOR RESEARCH USE ONLY. NOT FOR USE IN DIAGNOSTIC, THERAPEUTIC OR COSMETIC PROCEDURES. NOT FOR HUMAN OR ANIMAL CONSUMPTION. |

For Reference Only