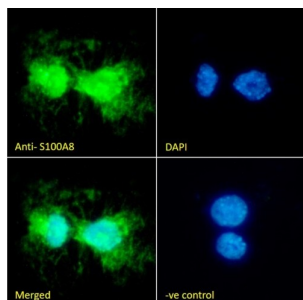
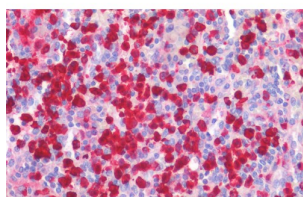


Protein S100-A8 / CAGA (S100A8) Antibody

Catalogue No.: abx433244



IF analysis of THP-1 cells using S100A8 Antibody (10ug/ml) with a secondary antibody conjugated to AF488 (2ug/ml), showing nuclear and cytoplasmic/extracellular staining. Blue DAPI was used as a nuclear stain. Non-specific Goat IgG antibody was used as a negative control (10ug/ml) with a secondary antibody conjugated to AF488 (2ug/ml).



IHC-P analysis of Human spleen tissue using S100A8 Antibody (5 µg/ml).

S100A8 Antibody is a Goat Polyclonal antibody against S100A8.

Target: Protein S100-A8 / CAGA (S100A8)

Clonality: Polyclonal

Reactivity: Human

Tested Applications: P-ELISA, IHC, IF/ICC

Host: Goat

Recommended dilutions: P-ELISA: 1/32000. Optimal dilutions/concentrations should be determined by the end user.

Conjugation: Unconjugated

Immunogen: [abx616811](#) - Internal region: C-KGADVWFKELDINT

Isotype: IgG

Form: Liquid

Purification: Purified from goat serum by ammonium sulphate precipitation followed by antigen affinity chromatography using the immunizing peptide.

Datasheet

Version: 3.0.0
Revision date: 20 Mar 2025



Storage:	Aliquot and store at -20°C. Avoid repeated freeze/thaw cycles.
Gene Symbol:	S100A8
GeneID:	6279
NCBI Accession:	NP_002955.2
Buffer:	Tris saline, pH 7.3, containing 0.02% sodium azide and 0.5% bovine serum albumin.
Concentration:	0.5 mg/ml
Note:	THIS PRODUCT IS FOR RESEARCH USE ONLY. NOT FOR USE IN DIAGNOSTIC, THERAPEUTIC OR COSMETIC PROCEDURES. NOT FOR HUMAN OR ANIMAL CONSUMPTION.

For Reference Only