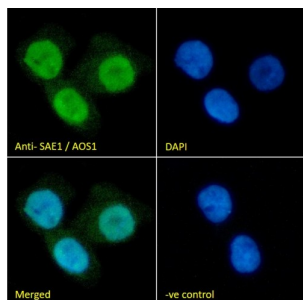
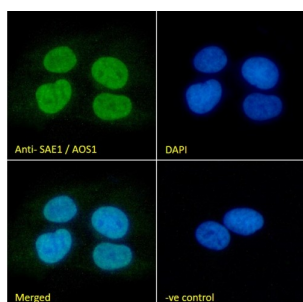


SUMO-Activating Enzyme Subunit 1 (SAE1) Antibody

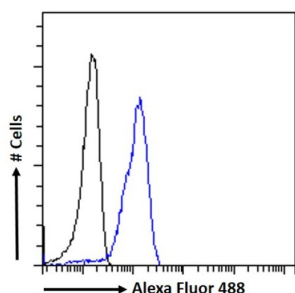
Catalogue No.: abx430292



IF analysis of A431 cells, using SUMO-Activating Enzyme Subunit 1 (SAE1) Antibody (10 µg/ml, 1 hour) followed by a secondary antibody conjugated to AF488 (2 µg/ml). Blue DAPI was used as a nuclear stain. Non-specific Goat IgG antibody was used as a negative control (10 µg/ml) followed a secondary antibody conjugated to AF488 (2 µg/ml).



IF analysis of U2OS cells, using SUMO-Activating Enzyme Subunit 1 (SAE1) Antibody (10 µg/ml) followed by a secondary antibody conjugated to AF488 (2 µg/ml). Blue DAPI was used as a nuclear stain. Non-specific Goat IgG antibody was used as a negative control (10 µg/ml) followed a secondary antibody conjugated to AF488 (2 µg/ml).



Flow cytometric analysis of A431 cells (blue) using SUMO-Activating Enzyme Subunit 1 (SAE1) Antibody (10 µg/ml) followed by a secondary antibody conjugated to AF488 (1 µg/ml). Non-specific Goat IgG antibody was used as a negative control (10 µg/ml) followed a secondary antibody conjugated to AF488 (2 µg/ml).

SAE1 Antibody is a Goat Polyclonal antibody against SAE1.

Target: SUMO-Activating Enzyme Subunit 1 (SAE1)

Clonality: Polyclonal

Reactivity: Human

Tested Applications: P-ELISA, WB, FCM

Host: Goat

Recommended dilutions: P-ELISA: 1/8000. Optimal dilutions/concentrations should be determined by the end user.

Conjugation: Unconjugated

Datasheet

Version: 3.0.0
Revision date: 12 Sep 2025



Immunogen:	abx269402 - C-Terminus: MKGNGIVECLGPK
Isotype:	IgG
Form:	Liquid
Purification:	Purified from goat serum by ammonium sulphate precipitation followed by antigen affinity chromatography using the immunizing peptide.
Storage:	Aliquot and store at -20°C. Avoid repeated freeze/thaw cycles.
Gene Symbol:	SAE1
GeneID:	10055
NCBI Accession:	NP_005491.1
Buffer:	Tris saline, pH 7.3, containing 0.02% sodium azide and 0.5% bovine serum albumin.
Concentration:	0.5 mg/ml
Note:	THIS PRODUCT IS FOR RESEARCH USE ONLY. NOT FOR USE IN DIAGNOSTIC, THERAPEUTIC OR COSMETIC PROCEDURES. NOT FOR HUMAN OR ANIMAL CONSUMPTION.

For Reference Only