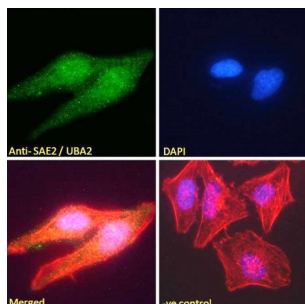
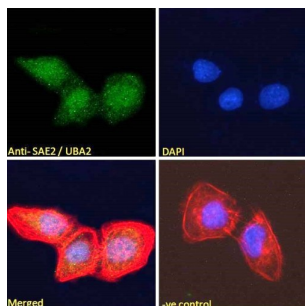


## SUMO-Activating Enzyme Subunit 2 (SAE2) Antibody

Catalogue No.: abx430135



abx430135 Immunofluorescence analysis of paraformaldehyde fixed HeLa cells, permeabilized with 0.15% Triton. Primary incubation 1hr (10 µg/ml) followed by AF488 secondary antibody (2 µg/ml), showing nuclear and weak cytoplasmic weak staining. Actin filaments were stained with phalloidin (red) and the nuclear stain is DAPI (blue). Negative control: Unimmunized goat IgG (10 µg/ml) followed by AF488 secondary antibody (2 µg/ml).



abx430135 Immunofluorescence analysis of paraformaldehyde fixed U2OS cells, permeabilized with 0.15% Triton. Primary incubation 1hr (10 µg/ml) followed by AF488 secondary antibody (2 µg/ml), showing nuclear staining. Actin filaments were stained with phalloidin (red) and the nuclear stain is DAPI (blue). Negative control: Unimmunized goat IgG (10 µg/ml) followed by AF488 secondary antibody (2 µg/ml).

SAE2 Antibody is a Goat Polyclonal antibody against SAE2.

**Target:** SUMO-Activating Enzyme Subunit 2 (SAE2)

**Clonality:** Polyclonal

**Reactivity:** Human, Mouse

**Tested Applications:** P-ELISA, WB, IF/ICC

**Host:** Goat

**Recommended dilutions:** P-ELISA: 1/16000. Optimal dilutions/concentrations should be determined by the end user.

**Conjugation:** Unconjugated

**Immunogen:** [abx269403](#) - N-Terminus: ALSRGLPRELAEA-C

**Isotype:** IgG

**Form:** Liquid

**Purification:** Purified from goat serum by ammonium sulphate precipitation followed by antigen affinity chromatography using the immunizing peptide.

# Datasheet

Version: 4.0.0

Revision date: 11 Sep 2025



<b>Storage:</b>	Aliquot and store at -20°C. Avoid repeated freeze/thaw cycles.
<b>Gene Symbol:</b>	SAE2
<b>GeneID:</b>	<a href="#">10054</a> <a href="#">50995</a>
<b>NCBI Accession:</b>	NP_005490
<b>Buffer:</b>	Tris saline, pH 7.3, containing 0.02% sodium azide and 0.5% bovine serum albumin.
<b>Concentration:</b>	0.5 mg/ml
<b>Note:</b>	THIS PRODUCT IS FOR RESEARCH USE ONLY. NOT FOR USE IN DIAGNOSTIC, THERAPEUTIC OR COSMETIC PROCEDURES. NOT FOR HUMAN OR ANIMAL CONSUMPTION.

For Reference Only