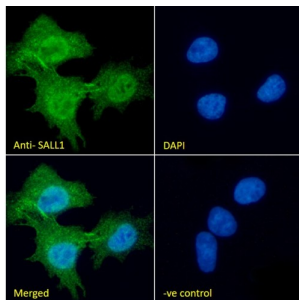
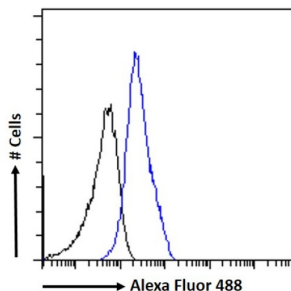


Sal-Like Protein 1 (SALL1) Antibody

Catalogue No.: abx432035



Immunofluorescence analysis of paraformaldehyde fixed HepG2 cells, using SALL1 antibody (10 µg/ml, 1 hour) followed by AF488-conjugated secondary antibody (2 µg/ml), showing nuclear and cytoplasmic staining, and DAPI (blue) nuclear stain. Cells were permeabilized with 0.15% Triton prior to analysis. Negative control: Unimmunized goat IgG (10 µg/ml) followed by AF488-conjugated secondary antibody (2 µg/ml).



Flow cytometric analysis of paraformaldehyde fixed HepG2 cells (blue line), using SALL1 antibody (10 µg/ml, 1 hour) followed by AF488-conjugated secondary antibody (1 µg/ml). Cells were permeabilized with 0.5% Triton prior to analysis. IgG control: Unimmunized goat IgG (black line) followed by AF488-conjugated secondary antibody.

SALL1 Antibody is a Goat Polyclonal antibody against SALL1.

Target:	Sal-Like Protein 1 (SALL1)
Clonality:	Polyclonal
Tested Applications:	P-ELISA, IF/ICC, FCM
Host:	Goat
Recommended dilutions:	P-ELISA: 1/32000. Optimal dilutions/concentrations should be determined by the end user.
Conjugation:	Unconjugated
Immunogen:	abx616030 - N-Terminus, 29-43 AA: EKGQPSRPTKSKDAH-C
Isotype:	IgG
Form:	Liquid
Purification:	Purified from goat serum by ammonium sulphate precipitation followed by antigen affinity chromatography using the immunizing peptide.
Storage:	Aliquot and store at -20°C. Avoid repeated freeze/thaw cycles.

Datasheet

Version: 4.0.0

Revision date: 22 Dec 2025



Gene Symbol: SALL1

GeneID: [6299](#) [58198](#)

NCBI Accession: NP_002959.2, NP_001121364.1

Buffer: Tris saline, pH 7.3, containing 0.02% sodium azide and 0.5% bovine serum albumin.

Concentration: 0.5 mg/ml

Note: THIS PRODUCT IS FOR RESEARCH USE ONLY. NOT FOR USE IN DIAGNOSTIC, THERAPEUTIC OR COSMETIC PROCEDURES. NOT FOR HUMAN OR ANIMAL CONSUMPTION.

For Reference Only