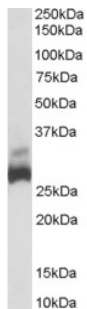
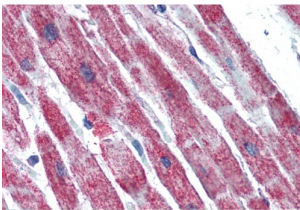


Succinate Dehydrogenase Complex Subunit B (SDHB) Antibody

Catalogue No.: abx433255



abx433255 (0.03 µg/ml) staining of Human Liver lysate (35 µg protein in RIPA buffer). Primary incubation was 1 hour. Detected by chemiluminescence.



abx433255 (5 µg/ml) staining of paraffin embedded Human Heart. Steamed antigen retrieval with citrate buffer pH 6, AP-staining.

SDHB Antibody is a Goat Polyclonal antibody against SDHB.

Target: Succinate Dehydrogenase Complex Subunit B (SDHB)

Clonality: Polyclonal

Reactivity: Human

Tested Applications: P-ELISA, WB, IHC

Host: Goat

Recommended dilutions: P-ELISA: 1/8000. Optimal dilutions/concentrations should be determined by the end user.

Conjugation: Unconjugated

Immunogen: [abx269727](#) - C-Terminus: C-ATYKEKKASV

Isotype: IgG

Form: Liquid

Purification: Purified from goat serum by ammonium sulphate precipitation followed by antigen affinity chromatography using the immunizing peptide.

Datasheet

Version: 4.0.0
Revision date: 03 Oct 2025



Storage:	Aliquot and store at -20°C. Avoid repeated freeze/thaw cycles.
Gene Symbol:	SDHB
GeneID:	6390
NCBI Accession:	NP_002991.2
Buffer:	Tris saline, pH 7.3, containing 0.02% sodium azide and 0.5% bovine serum albumin.
Concentration:	0.5 mg/ml
Note:	THIS PRODUCT IS FOR RESEARCH USE ONLY. NOT FOR USE IN DIAGNOSTIC, THERAPEUTIC OR COSMETIC PROCEDURES. NOT FOR HUMAN OR ANIMAL CONSUMPTION.

For Reference Only