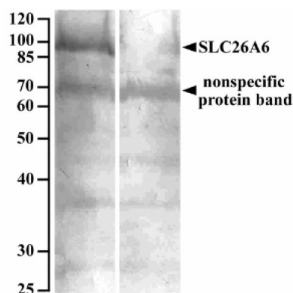
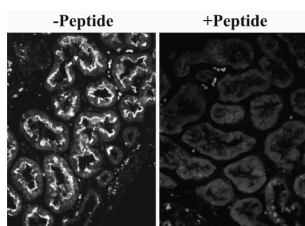


Solute Carrier Family 26 Member 6 (SLC26A6) Antibody

Catalogue No.: abx431411



abx431411 (10 µg/ml) staining of Human renal cortical brush-border membrane lysate (90µg protein denatured at 37C for 30min) with (B) and without (A) blocking with the immunizing peptide. Primary incubation was overnight at 4C. Detected by NBT/BCIP. Data kindly provided by Dean Karaica, B. Sc., and Ivan Sabolic, M.D., Ph.D., Institute for Medical Research and Occupational Health, Zagreb, Croatia.



abx431411 (0.1mg/ml) overnight staining of paraffin embedded Human Kidney. Microwaved antigen retrieval with citrate buffer pH 6, CY3-staining. Data kindly provided by Dean Karaica, B. Sc., and Ivan Sabolic, M.D., Ph.D., Institute for Medical Research and Occupational Health, Zagreb, Croatia.

SLC26A6 Antibody is a Goat Polyclonal antibody against SLC26A6.

Target: Solute Carrier Family 26 Member 6 (SLC26A6)

Clonality: Polyclonal

Reactivity: Human

Tested Applications: P-ELISA, WB, IHC

Host: Goat

Recommended dilutions: P-ELISA: 1/8000. Optimal dilutions/concentrations should be determined by the end user.

Conjugation: Unconjugated

Immunogen: [abx616203](#) - Internal region: C-SAPRTHQWRT

Isotype: IgG

Form: Liquid

Purification: Purified from goat serum by ammonium sulphate precipitation followed by antigen affinity chromatography using the immunizing peptide.

Datasheet

Version: 3.0.0

Revision date: 06 Mar 2025



Storage:	Aliquot and store at -20°C. Avoid repeated freeze/thaw cycles.
Gene Symbol:	SLC26A6
GeneID:	65010 171429
NCBI Accession:	NP_075062.2, NP_599025.2, NP_602298.2, NP_001035544.1
Buffer:	Tris saline, pH 7.3, containing 0.02% sodium azide and 0.5% bovine serum albumin.
Concentration:	0.5 mg/ml
Note:	THIS PRODUCT IS FOR RESEARCH USE ONLY. NOT FOR USE IN DIAGNOSTIC, THERAPEUTIC OR COSMETIC PROCEDURES. NOT FOR HUMAN OR ANIMAL CONSUMPTION.

For Reference Only