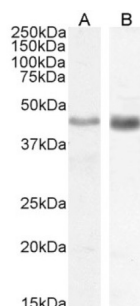
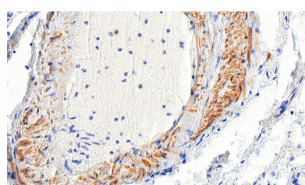


Solute Carrier Family 47 Member 1 (SLC47A1) Antibody

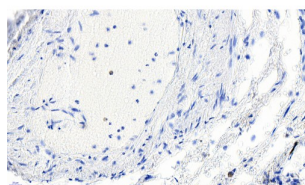
Catalogue No.: abx433283



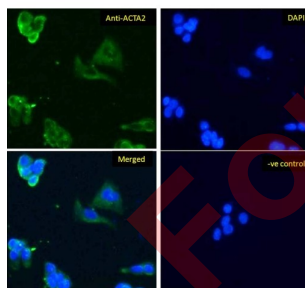
abx433283 (0.5 µg/ml) staining of Human (A) and (1 µg/ml) Mouse (B) Duodenum lysate (35 µg protein in RIPA buffer). Detected by chemiluminescence.



abx433283 (3.5 µg/ml) staining of paraffin embedded Human Lung. Heat induced antigen retrieval with citrate buffer pH 6, HRP-staining.



Negative Control showing staining of paraffin embedded Human Lung, with no primary antibody.



Immunofluorescence analysis of paraformaldehyde fixed HepG2 cells, permeabilized with 0.15% Triton. Primary incubation 1hr (10 µg/ml) followed by AF488 secondary antibody (1 µg/ml), showing cytoplasmic staining. The nuclear stain is DAPI (blue). Negative control: Unimmunized goat IgG (10 µg/ml) followed by AF488 secondary antibody (1 µg/ml).

SLC47A1 Antibody is a Goat Polyclonal antibody against SLC47A1.

Target: Solute Carrier Family 47 Member 1 (SLC47A1)

Clonality: Polyclonal

Reactivity: Human

Datasheet

Version: 3.0.0
Revision date: 11 Sep 2025



Tested Applications: P-ELISA, WB, IF/ICC

Host: Goat

Recommended dilutions: P-ELISA: 1/64000. Optimal dilutions/concentrations should be determined by the end user.

Conjugation: Unconjugated

Immunogen: [abx615832](#) - Internal region (near C-Terminus): C-PEHPQDGAKLSRKQ

Isotype: IgG

Form: Liquid

Purification: Purified from goat serum by ammonium sulphate precipitation followed by antigen affinity chromatography using the immunizing peptide.

Storage: Aliquot and store at -20°C. Avoid repeated freeze/thaw cycles.

Gene Symbol: SLC47A1

GeneID: [55244](#)

NCBI Accession: NP_060712.2

Buffer: Tris saline, pH 7.3, containing 0.02% sodium azide and 0.5% bovine serum albumin.

Concentration: 0.5 mg/ml

Note: THIS PRODUCT IS FOR RESEARCH USE ONLY. NOT FOR USE IN DIAGNOSTIC, THERAPEUTIC OR COSMETIC PROCEDURES. NOT FOR HUMAN OR ANIMAL CONSUMPTION.