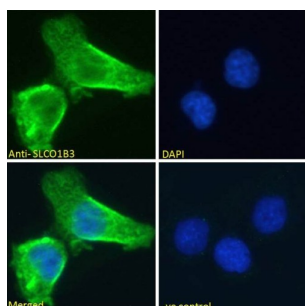


Solute Carrier Organic Anion Transporter Family Member 1B3 (SLCO1B3) Antibody

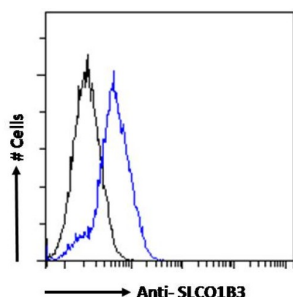
Catalogue No.: abx431881



abx431881 (1 µg/ml) staining of HEK293 (A) and A431 (B) cell lysate (35 µg protein in RIPA buffer). Detected by chemiluminescence.



abx431881 Immunofluorescence analysis of paraformaldehyde fixed A431 cells, permeabilized with 0.15% Triton. Primary incubation 1hr (10 µg/ml) followed by AF488 secondary antibody (2 µg/ml), showing membrane staining. The nuclear stain is DAPI (blue). Negative control: Unimmunized goat IgG (10 µg/ml) followed by AF488 secondary antibody (2 µg/ml).



Flow cytometry analysis of paraformaldehyde fixed HepG2 cells (blue line), permeabilized with 0.5% Triton. Primary incubation overnight (10 µg/ml) followed by AF488 secondary antibody (1 µg/ml). IgG control: Unimmunized goat IgG (black line) followed by AF488 secondary antibody.

SLCO1B3 Antibody is a Goat Polyclonal antibody against SLCO1B3.

Target: Solute Carrier Organic Anion Transporter Family Member 1B3 (SLCO1B3)

Clonality: Polyclonal

Reactivity: Human

Tested Applications: P-ELISA, WB, IF/ICC, FCM

Host: Goat

Recommended dilutions: P-ELISA: 1/128000, WB: 0.5-1 µg/ml, IF/ICC: 10 µg/ml, FCM: 10 µg/ml. Optimal dilutions/concentrations should be determined by the end user.

Datasheet

Version: 5.0.0
Revision date: 09 Sep 2025



Conjugation:	Unconjugated
Immunogen:	abx616061 - Internal region: C-NGTSPEIVEKD
Isotype:	IgG
Form:	Liquid
Purification:	Purified from goat serum by ammonium sulphate precipitation followed by antigen affinity chromatography using the immunizing peptide.
Storage:	Aliquot and store at -20°C. Avoid repeated freeze/thaw cycles.
UniProt Primary AC:	Q9NPD5 (UniProt , ExPASy)
Gene Symbol:	SLCO1B3
GenelD:	28234 28253
NCBI Accession:	NP_062818.1, NP_001336849.1
KEGG:	hsa:28234
String:	9606.ENSP00000261196
Buffer:	Tris saline, pH 7.3, containing 0.02% sodium azide and 0.5% bovine serum albumin.
Specificity:	Predicted to cross-react with Mouse and Dog SLCO1B3 by sequence homology.
Concentration:	0.5 mg/ml
Note:	THIS PRODUCT IS FOR RESEARCH USE ONLY. NOT FOR USE IN DIAGNOSTIC, THERAPEUTIC OR COSMETIC PROCEDURES. NOT FOR HUMAN OR ANIMAL CONSUMPTION.