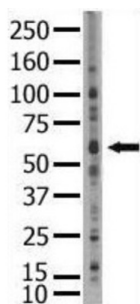
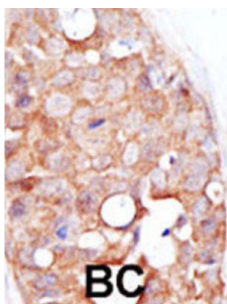


SUMO Specific Peptidase 2 (SEN2) Antibody

Catalogue No.:abx026741



SUMO is a small ubiquitin-like protein that can be covalently conjugated to other proteins. SEN2 is one of a group of enzymes that process newly synthesized SUMO1, SUMO2, and SUMO3 into the conjugatable mature forms and catalyze the deconjugation of these same SUMO proteins from their targeted substrates. SEN2 may also down-regulate CTNNB1 levels and thereby modulate the Wnt pathway.

Target: SUMO Specific Peptidase 2 (SEN2)

Clonality: Polyclonal

Reactivity: Human

Tested Applications: ELISA, IHC

Host: Rabbit

Recommended dilutions: IHC-P: 1/50 - 1/100. Not tested in IHC-F. Optimal dilutions/concentrations should be determined by the end user.

Conjugation: Unconjugated

Immunogen: KLH-conjugated synthetic peptide between 502-533 amino acids from the C-terminal region of human SEN2.

Isotype: IgG

Datasheet

Version: 3.0.0

Revision date: 05 Mar 2025



Form:	Liquid
Purification:	Purified through a protein G column, eluted with high and low pH buffers and neutralized immediately, followed by dialysis against PBS.
Storage:	Aliquot and store at -20°C. Avoid repeated freeze/thaw cycles.
UniProt Primary AC:	Q9HC62 (UniProt , ExPASy)
String:	9606.ENSP00000296257
Molecular Weight:	Calculated MW: 67.9 kDa
Buffer:	PBS containing 0.09% sodium azide.
Note:	THIS PRODUCT IS FOR RESEARCH USE ONLY. NOT FOR USE IN DIAGNOSTIC, THERAPEUTIC OR COSMETIC PROCEDURES. NOT FOR HUMAN OR ANIMAL CONSUMPTION.

For Reference Only