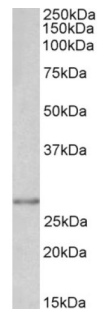
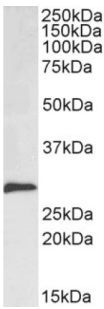


Snail Family Transcriptional Repressor 1 / SNAIL (SNAI1) Antibody

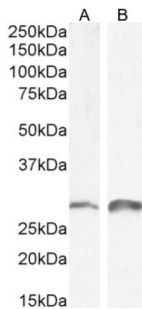
Catalogue No.:abx430958



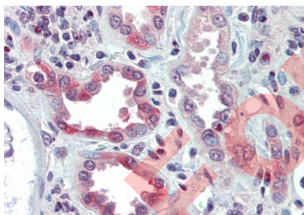
abx430958 (0.1 µg/ml) staining of A431 lysate (35 µg protein in RIPA buffer). Detected by chemiluminescence.



abx430958 (0.1 µg/ml) staining of Rat Kidney lysate (35 µg protein in RIPA buffer). Detected by chemiluminescence.



abx430958 (0.1 µg/ml) staining of Mouse (A) and Rat (B) Kidney lysate (35 µg protein in RIPA buffer). Detected by chemiluminescence.



abx430958 (5 µg/ml staining of paraffin embedded Human Kidney. Steamed antigen retrieval with citrate buffer pH 6, AP-staining.

Snail homolog 1 Antibody is a Goat Polyclonal antibody against Snail homolog 1.

Target: Snail Family Transcriptional Repressor 1 / SNAIL (SNAI1)

Clonality: Polyclonal

Reactivity: Mouse, Rat

Datasheet

Version: 3.0.0
Revision date: 07 Sep 2025



Tested Applications: P-ELISA, WB

Host: Goat

Recommended dilutions: P-ELISA: 1/64000. Optimal dilutions/concentrations should be determined by the end user.

Conjugation: Unconjugated

Immunogen: [abx269976](#) - N-Terminus: RKPSDPNRKPNY-C

Isotype: IgG

Form: Liquid

Purification: Purified from goat serum by ammonium sulphate precipitation followed by antigen affinity chromatography using the immunizing peptide.

Storage: Aliquot and store at -20°C. Avoid repeated freeze/thaw cycles.

Gene Symbol: SNAI1

GeneID: [20613](#) [116490](#)

NCBI Accession: NP_005976.2

Buffer: Tris saline, pH 7.3, containing 0.02% sodium azide and 0.5% bovine serum albumin.

Concentration: 0.5 mg/ml

Note: THIS PRODUCT IS FOR RESEARCH USE ONLY. NOT FOR USE IN DIAGNOSTIC, THERAPEUTIC OR COSMETIC PROCEDURES. NOT FOR HUMAN OR ANIMAL CONSUMPTION.