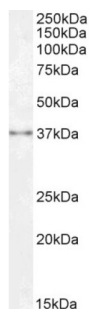
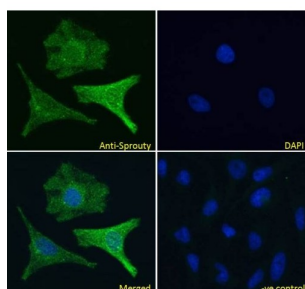


Sprouty Antibody

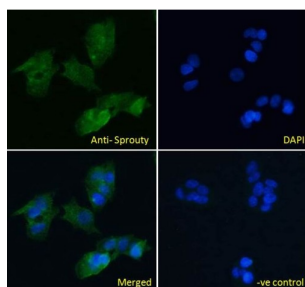
Catalogue No.: abx433319



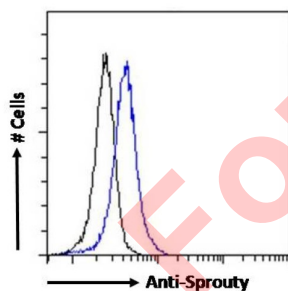
abx433319 (0.3 µg/ml) staining of Human Kidney lysate (35 µg protein in RIPA buffer). Detected by chemiluminescence.



abx433319 Immunofluorescence analysis of paraformaldehyde fixed HeLa cells, permeabilized with 0.15% Triton. Primary incubation 1hr (10 µg/ml) followed by AF488 secondary antibody (4 µg/ml), showing cytoplasmic and Golgi apparatus staining. The nuclear stain is DAPI (blue). Negative control: Unimmunized goat IgG (10 µg/ml) followed by AF488 secondary antibody (4 µg/ml).



abx433319 Immunofluorescence analysis of paraformaldehyde fixed HepG2 cells, permeabilized with 0.15% Triton. Primary incubation 1hr (10 µg/ml) followed by AF488 secondary antibody (4 µg/ml), showing cytoplasmic and Golgi apparatus staining. The nuclear stain is DAPI (blue). Negative control: Unimmunized goat IgG (10 µg/ml) followed by AF488 secondary antibody (4 µg/ml).



Flow cytometry analysis of paraformaldehyde fixed HEK293 cells (blue line), permeabilized with 0.5% Triton. Primary incubation 1hr (10 µg/ml) followed by AF488 secondary antibody (0.4 µg/ml). IgG control: Unimmunized goat IgG (black line) followed by AF488 secondary antibody.

Sprouty Antibody is a Goat Polyclonal antibody against Sprouty.

Target: Sprouty

Clonality: Polyclonal

Reactivity: Human, Mouse

Datasheet

Version: 4.0.0
Revision date: 16 Sep 2025



Tested Applications: P-ELISA, WB, IHC, IF/ICC, FCM

Host: Goat

Recommended dilutions: P-ELISA: 1/16000. Optimal dilutions/concentrations should be determined by the end user.

Conjugation: Unconjugated

Immunogen: [abx269548](#) - C-Terminus: CPSRGQGKPS

Isotype: IgG

Form: Liquid

Purification: Purified from goat serum by ammonium sulphate precipitation followed by antigen affinity chromatography using the immunizing peptide.

Storage: Aliquot and store at -20°C. Avoid repeated freeze/thaw cycles.

Gene Symbol: SPRY1

GeneID: [10252](#)

NCBI Accession: NP_005832.1, NP_955359.1

Buffer: Tris saline, pH 7.3, containing 0.02% sodium azide and 0.5% bovine serum albumin.

Concentration: 0.5 mg/ml

Note: THIS PRODUCT IS FOR RESEARCH USE ONLY. NOT FOR USE IN DIAGNOSTIC, THERAPEUTIC OR COSMETIC PROCEDURES. NOT FOR HUMAN OR ANIMAL CONSUMPTION.