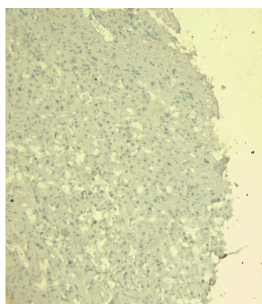
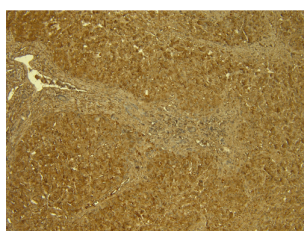


STAT3 (Isoform 1 and 2) Antibody

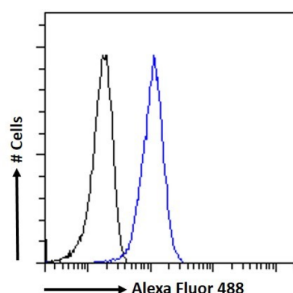
Catalogue No.: abx431616



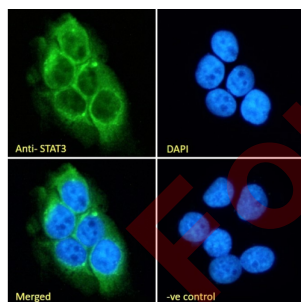
IHC-P analysis using abx431616 (7 µg/ml) of Human Liver tissue.



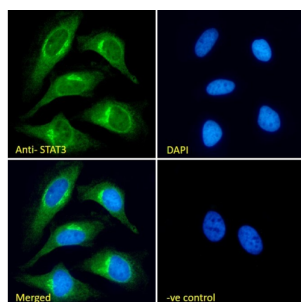
IHC-P analysis of Human Liver tissue, with no primary antibody.



Flow cytometry analysis of A431 cells (blue line) using abx431616 (10 µg/ml) followed by a secondary antibody conjugated to AF488 (1 µg/ml). Non-specific Goat IgG was used as a negative control followed by a secondary antibody conjugated to AF488.



IF analysis of A431 cells using abx431616 (10 µg/ml) followed by a secondary antibody conjugated to AF488 (2 µg/ml). The nuclear stain is DAPI (blue). Non-specific Goat IgG (10 µg/ml) was used as a negative control followed by a secondary antibody conjugated to AF488 (2 µg/ml).



IF analysis of HeLa cells using abx431616 (10 µg/ml) followed by a secondary antibody conjugated to AF488 (2 µg/ml), showing cytoplasmic and Golgi apparatus staining. The nuclear stain is DAPI (blue). Non-specific Goat IgG (10 µg/ml) was used as a negative control followed by a secondary antibody conjugated to AF488 (2 µg/ml).

Datasheet

Version: 3.0.0
Revision date: 14 Sep 2025



STAT3 (Isoform 1 and 2) Antibody is a Goat Polyclonal antibody against STAT3 (Isoform 1 and 2).

Target:	STAT3 (Isoform 1 and 2)
Clonality:	Polyclonal
Reactivity:	Human, Mouse
Tested Applications:	P-ELISA, IHC, IF/ICC, FCM
Host:	Goat
Recommended dilutions:	P-ELISA: 1/8000. Optimal dilutions/concentrations should be determined by the end user.
Conjugation:	Unconjugated
Immunogen:	abx269029 - C-Terminus: DMELTSECATSPM
Isotype:	IgG
Form:	Liquid
Purification:	Purified from goat serum by ammonium sulphate precipitation followed by antigen affinity chromatography using the immunizing peptide.
Storage:	Aliquot and store at -20°C. Avoid repeated freeze/thaw cycles.
Gene Symbol:	STAT3
GeneID:	6774 20848 25125
NCBI Accession:	NP_003141.2, NP_644805.1
Buffer:	Tris saline, pH 7.3, containing 0.02% sodium azide and 0.5% bovine serum albumin.
Concentration:	0.5 mg/ml
Note:	THIS PRODUCT IS FOR RESEARCH USE ONLY. NOT FOR USE IN DIAGNOSTIC, THERAPEUTIC OR COSMETIC PROCEDURES. NOT FOR HUMAN OR ANIMAL CONSUMPTION.