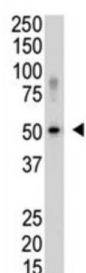
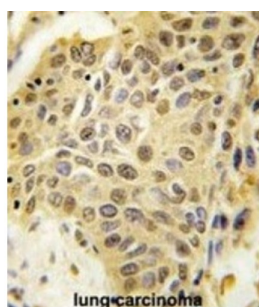
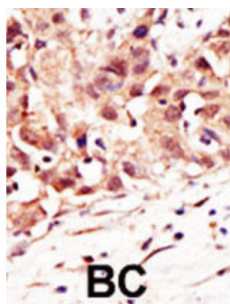


## SUMO1/Sentrin Specific Peptidase 5 (SEN5) Antibody

Catalogue No.: abx026768



SEN5 is a protease that catalyzes two essential functions in the SUMO pathway: processing of full-length SUMO3 to its conjugatable mature form and deconjugation of SUMO2 and SUMO3 from targeted substrates. This protein has weak proteolytic activity against full-length SUMO1 or SUMO1 conjugates. SEN5 is required for cell division.

**Target:** SUMO1/Sentrin Specific Peptidase 5 (SEN5)

**Clonality:** Polyclonal

**Reactivity:** Human

**Tested Applications:** ELISA, WB, IHC

**Host:** Rabbit

**Recommended dilutions:** WB: 1/1000, IHC-P: 1/50 - 1/100. Not tested in IHC-F. Optimal dilutions/concentrations should be determined by the end user.

# Datasheet

Version: 2.0.0  
Revision date: 24 Sep 2025



<b>Conjugation:</b>	Unconjugated
<b>Immunogen:</b>	KLH-conjugated synthetic peptide between 524-555 amino acids from the C-terminal region of human SENP5.
<b>Isotype:</b>	IgG
<b>Form:</b>	Liquid
<b>Purification:</b>	Purified through a protein G column, eluted with high and low pH buffers and neutralized immediately, followed by dialysis against PBS.
<b>Storage:</b>	Aliquot and store at -20°C. Avoid repeated freeze/thaw cycles.
<b>UniProt Primary AC:</b>	Q96HI0 ( <a href="#">UniProt</a> , <a href="#">ExPASy</a> )
<b>KEGG:</b>	hsa:205564
<b>String:</b>	<a href="#">9606.ENSP00000327197</a>
<b>Molecular Weight:</b>	Calculated MW: 86.7 kDa
<b>Buffer:</b>	PBS containing 0.09% sodium azide.
<b>Specificity:</b>	Predicted to react with Mouse and Monkey SENP5.
<b>Note:</b>	THIS PRODUCT IS FOR RESEARCH USE ONLY. NOT FOR USE IN DIAGNOSTIC, THERAPEUTIC OR COSMETIC PROCEDURES. NOT FOR HUMAN OR ANIMAL CONSUMPTION.