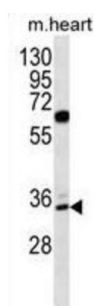
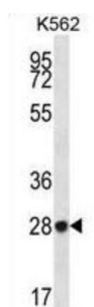
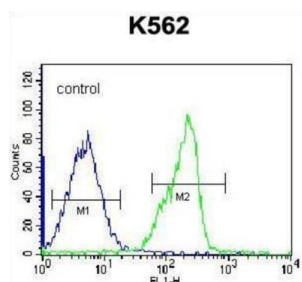


Zinc Finger Protein 146 (ZNF146) Antibody

Catalogue No.: abx026773



The ZNF146 protein is a 33 kDa Kruppel protein, composed solely of 10 zinc finger motifs. ZNF146 overexpression in tumours may alter the balance between hRap1 and other telomeric proteins; therefore ZNF146 function may be linked to telomere regulation. ZNF146 is strongly overexpressed in many pancreas and colorectal cancers. Increased gene copy numbers are detected in 3 of 12 tumor cell lines and 2 of 12 primary pancreatic carcinomas. ZNF146 is overexpressed in 80% of colorectal cancers.

Target: Zinc Finger Protein 146 (ZNF146)

Clonality: Polyclonal

Reactivity: Human, Mouse

Tested Applications: ELISA, WB, FCM

Host: Rabbit

Datasheet

Version: 2.0.0
Revision date: 02 Sep 2025



Recommended dilutions:	WB: 1/1000, FCM: 1/10 - 1/50. Optimal dilutions/concentrations should be determined by the end user.
Conjugation:	Unconjugated
Immunogen:	KLH-conjugated synthetic peptide between 17-45 amino acids from the N-terminal region of human ZNF146.
Isotype:	IgG
Form:	Liquid
Purification:	Purified through a protein A column, followed by peptide affinity purification.
Storage:	Aliquot and store at -20°C. Avoid repeated freeze/thaw cycles.
UniProt Primary AC:	Q15072 (UniProt , ExPASy)
KEGG:	hsa:7705
String:	9606.ENSP00000400391
Molecular Weight:	Calculated MW: 33.3 kDa
Buffer:	PBS containing 0.09% sodium azide.
Note:	THIS PRODUCT IS FOR RESEARCH USE ONLY. NOT FOR USE IN DIAGNOSTIC, THERAPEUTIC OR COSMETIC PROCEDURES. NOT FOR HUMAN OR ANIMAL CONSUMPTION.