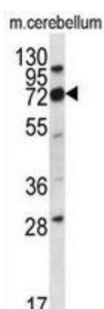
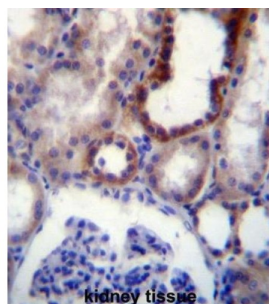


Immunoglobulin Superfamily Member 8 (IGSF8) Antibody

Catalogue No.: abx026774



IGSF8 may play a key role in diverse functions ascribed to CD81 and CD9 such as oocytes fertilization or hepatitis C virus function. May regulate proliferation and differentiation of keratinocytes. May be a negative regulator of cell motility: suppresses T-cell mobility coordinately with CD81, associates with CD82 to suppress prostate cancer cell migration, regulates epidermoid cell reaggregation and motility on laminin-5 with CD9 and CD81 as key linkers. May also play a role on integrin-dependent morphology and motility functions. May participate in the regulation of neurite outgrowth and maintenance of the neural network in the adult brain.

Target: Immunoglobulin Superfamily Member 8 (IGSF8)

Clonality: Polyclonal

Reactivity: Human, Mouse

Tested Applications: ELISA, WB, IHC

Host: Rabbit

Recommended dilutions: WB: 1/1000, IHC-P: 1/10 - 1/50. Not tested in IHC-F. Optimal dilutions/concentrations should be determined by the end user.

Conjugation: Unconjugated

Immunogen: KLH-conjugated synthetic peptide between 226-254 amino acids from the Central region of human IGSF8.

Isotype: IgG

Datasheet

Version: 3.0.0

Revision date: 26 Jun 2025



Form:	Liquid
Purification:	Purified through a protein A column, followed by peptide affinity purification.
Storage:	Aliquot and store at -20°C. Avoid repeated freeze/thaw cycles.
UniProt Primary AC:	Q969P0 (UniProt , ExPASy)
Molecular Weight:	Calculated MW: 65 kDa
Buffer:	PBS containing 0.09% sodium azide.
Note:	THIS PRODUCT IS FOR RESEARCH USE ONLY. NOT FOR USE IN DIAGNOSTIC, THERAPEUTIC OR COSMETIC PROCEDURES. NOT FOR HUMAN OR ANIMAL CONSUMPTION.

For Reference Only