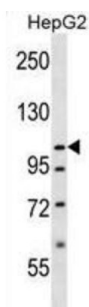
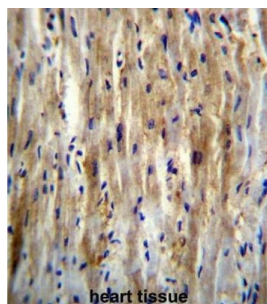


Solute Carrier Family 12 Member 7 (SLC12A7) Antibody

Catalogue No.: abx026777



SLC12A7 mediates electroneutral potassium-chloride cotransport when activated by cell swelling. May mediate K (+) uptake into Deiters' cells in the cochlea and contribute to K (+) recycling in the inner ear. Important for the survival of cochlear outer and inner hair cells and the maintenance of the organ of Corti. May be required for basolateral Cl (-) extrusion in the kidney and contribute to renal acidification (By similarity).

Target: Solute Carrier Family 12 Member 7 (SLC12A7)

Clonality: Polyclonal

Reactivity: Human

Tested Applications: ELISA, WB, IHC

Host: Rabbit

Recommended dilutions: WB: 1/1000, IHC-P: 1/10 - 1/50. Not tested in IHC-F. Optimal dilutions/concentrations should be determined by the end user.

Conjugation: Unconjugated

Immunogen: KLH-conjugated synthetic peptide between 89-117 amino acids from the N-terminal region of human SLC12A7.

Isotype: IgG

Datasheet

Version: 3.0.0
Revision date: 10 Sep 2025



Form:	Liquid
Purification:	Purified through a protein A column, followed by peptide affinity purification.
Storage:	Aliquot and store at -20°C. Avoid repeated freeze/thaw cycles.
UniProt Primary AC:	Q9Y666 (UniProt , ExPASy)
Gene Symbol:	SLC12A7
String:	9606.ENSP00000264930
Molecular Weight:	Calculated MW: 119 kDa
Buffer:	PBS containing 0.09% sodium azide.
Note:	THIS PRODUCT IS FOR RESEARCH USE ONLY. NOT FOR USE IN DIAGNOSTIC, THERAPEUTIC OR COSMETIC PROCEDURES. NOT FOR HUMAN OR ANIMAL CONSUMPTION.

For Reference Only