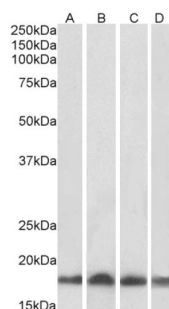


## Ubiquitin-Conjugating Enzyme E2 L3 (UBE2L3) Antibody

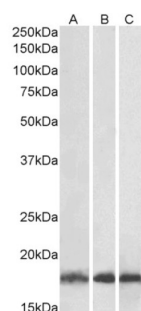
Catalogue No.: abx431690



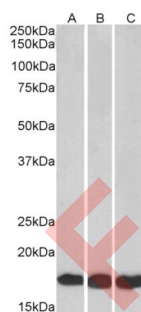
abx431690 staining (0.5 µg/ml) of HeLa lysate (RIPA buffer, 35 µg total protein per lane). Primary incubated for 1 hour. Detected by western blot using chemiluminescence.



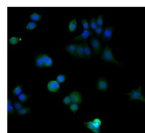
abx431690 (0.01 µg/ml) staining of Human (A), Mouse (B), Rat (C) and Pig (D) Heart lysate (35 µg protein in RIPA buffer). Primary incubation was 1 hour. Detected by chemiluminescence.



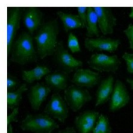
abx431690 (0.03 µg/ml) staining of Human (A), Mouse (B) and Rat (C) Skeletal Muscle lysates (35 µg protein in RIPA buffer). Primary incubation was 1 hour. Detected by chemiluminescence.



abx431690 (0.01 µg/ml) staining of HEK293 (A), HepG2 (B) and Jurkat (C) lysates (35 µg protein in RIPA buffer). Primary incubation was 1 hour. Detected by chemiluminescence.



A



B

Immunofluorescence staining of MCF7 (A) and HeLa (B) cells with 5 µg/ml abx431690 antibody. Detected with Rabbit anti-goat IgG-Alexafluor488 antibody at 1/1000. Nuclei Counterstained with DAPI.

# Datasheet

Version: 2.0.0  
Revision date: 30 Aug 2025



UBE2L3 Antibody is a Goat Polyclonal antibody against UBE2L3.

<b>Target:</b>	Ubiquitin-Conjugating Enzyme E2 L3 (UBE2L3)
<b>Clonality:</b>	Polyclonal
<b>Reactivity:</b>	Human, Mouse, Rat, Pig
<b>Tested Applications:</b>	P-ELISA, WB, IF/ICC
<b>Host:</b>	Goat
<b>Recommended dilutions:</b>	P-ELISA: 1/128000. Optimal dilutions/concentrations should be determined by the end user.
<b>Conjugation:</b>	Unconjugated
<b>Immunogen:</b>	<a href="#">abx269281</a> - C-Terminus: C-EFTKKYGEKRPVD
<b>Isotype:</b>	IgG
<b>Form:</b>	Liquid
<b>Purification:</b>	Purified from goat serum by ammonium sulphate precipitation followed by antigen affinity chromatography using the immunizing peptide.
<b>Storage:</b>	Aliquot and store at -20°C. Avoid repeated freeze/thaw cycles.
<b>Gene Symbol:</b>	UBE2L3
<b>GeneID:</b>	<a href="#">7332</a> <a href="#">22195</a>
<b>NCBI Accession:</b>	NP_003338.1
<b>Buffer:</b>	Tris saline, pH 7.3, containing 0.02% sodium azide and 0.5% bovine serum albumin.
<b>Concentration:</b>	0.5 mg/ml
<b>Note:</b>	THIS PRODUCT IS FOR RESEARCH USE ONLY. NOT FOR USE IN DIAGNOSTIC, THERAPEUTIC OR COSMETIC PROCEDURES. NOT FOR HUMAN OR ANIMAL CONSUMPTION.