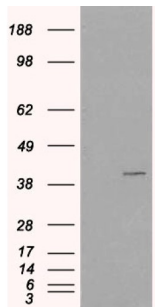
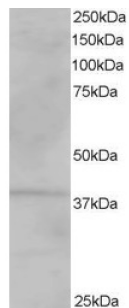


Vacuolar Protein Sorting-Associated Protein 26A (VPS26A) Antibody

Catalogue No.: abx431901



HEK293 overexpressing VPS26A and probed with abx431901 (mock transfection in first lane).



abx431901 staining (1 µg/ml) of Human Kidney lysate (RIPA buffer, 35 µg total protein per lane). Primary incubated for 1 hour. Detected by chemiluminescence.

VPS26A Antibody is a Goat Polyclonal antibody against VPS26A.

Target: Vacuolar Protein Sorting-Associated Protein 26A (VPS26A)**Clonality:** Polyclonal**Reactivity:** Human**Tested Applications:** P-ELISA, WB**Host:** Goat**Recommended dilutions:** P-ELISA: 1/4000. Optimal dilutions/concentrations should be determined by the end user.**Conjugation:** Unconjugated**Immunogen:** [abx269475](#) - C-Terminus: C-SPESQASAEQPEM**Isotype:** IgG**Form:** Liquid**Purification:** Purified from goat serum by ammonium sulphate precipitation followed by antigen affinity chromatography using the immunizing peptide.

Datasheet

Version: 3.0.0
Revision date: 20 Mar 2025



Storage: Aliquot and store at -20°C. Avoid repeated freeze/thaw cycles.

Gene Symbol: VPS26A

GeneID: [9559](#) [30930](#)

NCBI Accession: NP_004887.2

Buffer: Tris saline, pH 7.3, containing 0.02% sodium azide and 0.5% bovine serum albumin.

Concentration: 0.5 mg/ml

Note: THIS PRODUCT IS FOR RESEARCH USE ONLY. NOT FOR USE IN DIAGNOSTIC, THERAPEUTIC OR COSMETIC PROCEDURES. NOT FOR HUMAN OR ANIMAL CONSUMPTION.

For Reference Only