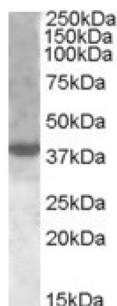
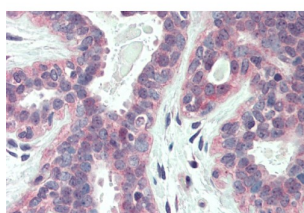


## X-Box-Binding Protein 1 (XBP1) Antibody

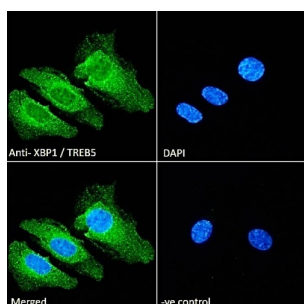
Catalogue No.: abx430110



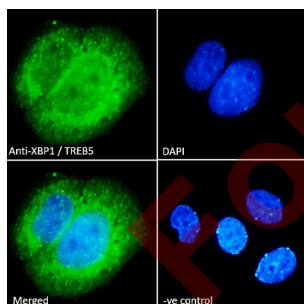
abx430110 (1 µg/ml) staining of nuclear HeLa lysate (35 µg protein in RIPA buffer). Primary incubation was 1 hour. Detected by chemiluminescence.



abx430110 (5 µg/ml) staining of paraffin embedded Human Breast. Steamed antigen retrieval with citrate buffer pH 6, AP-staining.



Immunofluorescence analysis of paraformaldehyde fixed HeLa cells, permeabilized with 0.15% Triton. Primary incubation 1hr (10 µg/ml) followed by AF488 secondary antibody (2 µg/ml), showing ER, cytoplasmic and nuclear staining. The nuclear stain is DAPI (blue). Negative control: Unimmunized goat IgG (10 µg/ml) followed by AF488 secondary antibody (2 µg/ml).



Immunofluorescence analysis of paraformaldehyde fixed MCF7 cells, permeabilized with 0.15% Triton. Primary incubation 1hr (10 µg/ml) followed by AF488 secondary antibody (2 µg/ml), showing ER, cytoplasmic and nuclear staining. The nuclear stain is DAPI (blue). Negative control: Unimmunized goat IgG (10 µg/ml) followed by AF488 secondary antibody (2 µg/ml).

XBP1 Antibody is a Goat Polyclonal antibody against XBP1.

**Target:** X-Box-Binding Protein 1 (XBP1)

**Clonality:** Polyclonal

**Reactivity:** Human

# Datasheet

Version: 2.0.0  
Revision date: 17 Sep 2025



**Tested Applications:** P-ELISA, WB, IHC, IF/ICC

**Host:** Goat

**Recommended dilutions:** P-ELISA: 1/4000. Optimal dilutions/concentrations should be determined by the end user.

**Conjugation:** Unconjugated

**Immunogen:** [abx615547](#) - Internal region: C-NHSWEDTFANELFPQ

**Isotype:** IgG

**Form:** Liquid

**Purification:** Purified from goat serum by ammonium sulphate precipitation followed by antigen affinity chromatography using the immunizing peptide.

**Storage:** Aliquot and store at -20°C. Avoid repeated freeze/thaw cycles.

**Gene Symbol:** XBP1

**GeneID:** [7494 22433](#)

**NCBI Accession:** NP\_001073007.1

**Buffer:** Tris saline, pH 7.3, containing 0.02% sodium azide and 0.5% bovine serum albumin.

**Concentration:** 0.5 mg/ml

**Note:** THIS PRODUCT IS FOR RESEARCH USE ONLY. NOT FOR USE IN DIAGNOSTIC, THERAPEUTIC OR COSMETIC PROCEDURES. NOT FOR HUMAN OR ANIMAL CONSUMPTION.