

XRCC4-like factor Antibody

Catalogue No.: abx430965

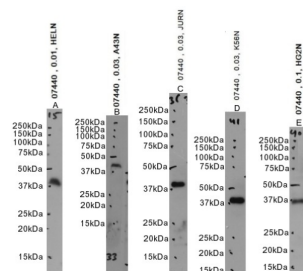
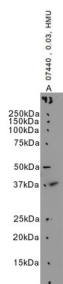
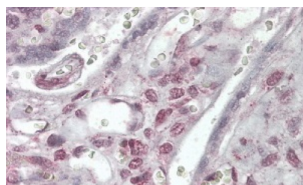


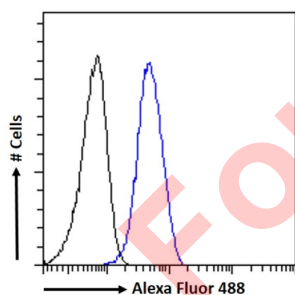
Image A: WB analysis using abx430965 of HeLa nuclear cell lysate. Images B, C and D: A431, Jurkat, K562 nuclear cell lysate. Image E: HepG2 nuclear cell lysate.



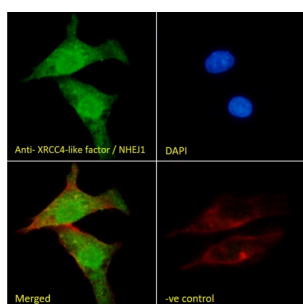
WB analysis using abx430965 (0.03 ug/ml) of Human Skeletal muscle lysate.



IHC-P analysis using abx430965 (3.8 ug/ml) of Human Placenta.



Flow cytometry analysis of HepG2 cells (blue line) using abx430965 (10 ug/ml) followed by a secondary antibody conjugated to AF488 (1 ug/ml). Non-specific Goat IgG was used as a negative control followed by a secondary antibody conjugated to AF488.

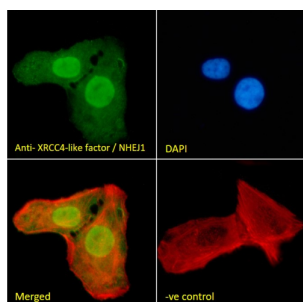


IF analysis of HepG2 cells using abx430965 (10 ug/ml) followed by a secondary antibody conjugated to AF488 (2 ug/ml), showing nuclear and cytoplasmic staining. Actin filaments were stained with phalloidin (red) and the nuclear stain is DAPI (blue). Non-specific Goat IgG (10 ug/ml) was used as a negative control followed by a secondary antibody conjugated to AF488 (2 ug/ml).

Datasheet

Version: 2.0.0

Revision date: 26 Aug 2025



IF analysis of U2OS cells using abx430965 (10 ug/ml) followed by a secondary antibody conjugated to AF488 (2 ug/ml). Actin filaments were stained with phalloidin (red) and the nuclear stain is DAPI (blue). Non-specific Goat IgG (10 ug/ml) was used as a negative control followed by a secondary antibody conjugated to AF488 (2 ug/ml).

XRCC4-like factor Antibody is a Goat Polyclonal antibody against XRCC4-like factor.

Target: XRCC4-like factor

Clonality: Polyclonal

Reactivity: Human

Tested Applications: P-ELISA, WB, IHC, IF/ICC, FCM

Host: Goat

Recommended dilutions: P-ELISA: 1/64000. Optimal dilutions/concentrations should be determined by the end user.

Conjugation: Unconjugated

Immunogen: [abx269986](#) - C-Terminus: C-QRPQLSKVKRKKPR

Isotype: IgG

Form: Liquid

Purification: Purified from goat serum by ammonium sulphate precipitation followed by antigen affinity chromatography using the immunizing peptide.

Storage: Aliquot and store at -20°C. Avoid repeated freeze/thaw cycles.

Gene Symbol: NHEJ1

GeneID: [79840](#)

NCBI Accession: NP_079058.1

Buffer: Tris saline, pH 7.3, containing 0.02% sodium azide and 0.5% bovine serum albumin.

Datasheet

Version: 2.0.0

Revision date: 26 Aug 2025



Concentration: 0.5 mg/ml

Note: THIS PRODUCT IS FOR RESEARCH USE ONLY. NOT FOR USE IN DIAGNOSTIC, THERAPEUTIC OR COSMETIC PROCEDURES. NOT FOR HUMAN OR ANIMAL CONSUMPTION.

For Reference Only