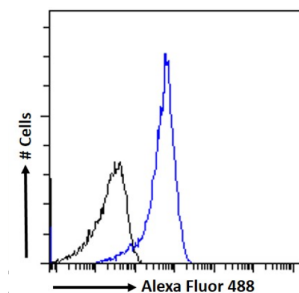
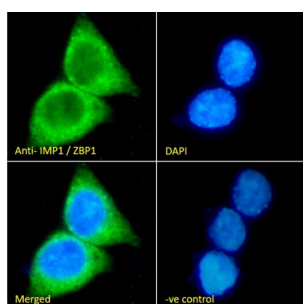


# Insulin Like Growth Factor 2 mRNA Binding Protein 1 (IGF2BP1) Antibody

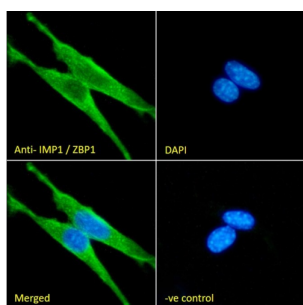
Catalogue No.: abx430069



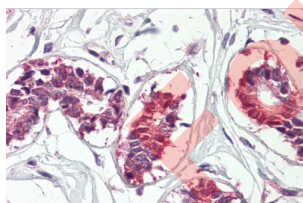
Flow cytometry analysis of HepG2 cells (blue line), using Insulin Like Growth Factor 2 mRNA Binding Protein 1 (IGF2BP1) Antibody (10 ug/ml) followed by secondary antibody conjugated to Alexa Fluor 488 (1ug/ml). Non-specific Goat IgG (black line) was used as a negative control.



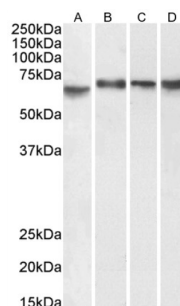
IF analysis of HepG2 cells, using Insulin Like Growth Factor 2 mRNA Binding Protein 1 (IGF2BP1) Antibody (10 ug/ml) followed by secondary antibody conjugated to Alexa Fluor 488 (2ug/ml). DAPI was used for nuclear staining. Non-specific Goat IgG antibody was used as a negative control (10 ug/ml).



IF analysis of NIH3T3 cells, using Insulin Like Growth Factor 2 mRNA Binding Protein 1 (IGF2BP1) Antibody (10 ug/ml) followed by secondary antibody conjugated to Alexa Fluor 488 (2ug/ml). DAPI was used for nuclear staining. Non-specific Goat IgG antibody was used as a negative control (10 ug/ml).



IHC-P analysis of Human Breast tissue, using Insulin Like Growth Factor 2 mRNA Binding Protein 1 (IGF2BP1) Antibody (3.75 µg/ml).



WB analysis of Caco-2 (A), K562 (B), nuclear HepG2 (C) and nuclear NIH3T3 (D) cell lysates, using Insulin Like Growth Factor 2 mRNA Binding Protein 1 (IGF2BP1) Antibody.

# Datasheet

Version: 2.0.0  
Revision date: 28 Aug 2025



IGF2BP1/IMP1 Antibody is a Goat Polyclonal antibody against IGF2BP1/IMP1.

<b>Target:</b>	Insulin Like Growth Factor 2 mRNA Binding Protein 1 (IGF2BP1)
<b>Clonality:</b>	Polyclonal
<b>Reactivity:</b>	Human
<b>Tested Applications:</b>	P-ELISA, WB, IHC, IF/ICC, FCM
<b>Host:</b>	Goat
<b>Recommended dilutions:</b>	P-ELISA: 1/16000. Optimal dilutions/concentrations should be determined by the end user.
<b>Conjugation:</b>	Unconjugated
<b>Immunogen:</b>	<a href="#">abx616262</a> - Internal region: C-EKVFAEHKISYSGQ
<b>Isotype:</b>	IgG
<b>Form:</b>	Liquid
<b>Purification:</b>	Purified from goat serum by ammonium sulphate precipitation followed by antigen affinity chromatography using the immunizing peptide.
<b>Storage:</b>	Aliquot and store at -20°C. Avoid repeated freeze/thaw cycles.
<b>Gene Symbol:</b>	IGF2BP1
<b>GeneID:</b>	<a href="#">10642</a> <a href="#">140486</a> <a href="#">303477</a>
<b>NCBI Accession:</b>	NP_006537.3, NP_001153895.1
<b>Buffer:</b>	Tris saline, pH 7.3, containing 0.02% sodium azide and 0.5% bovine serum albumin.
<b>Concentration:</b>	0.5 mg/ml
<b>Note:</b>	THIS PRODUCT IS FOR RESEARCH USE ONLY. NOT FOR USE IN DIAGNOSTIC, THERAPEUTIC OR COSMETIC PROCEDURES. NOT FOR HUMAN OR ANIMAL CONSUMPTION.