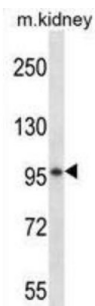
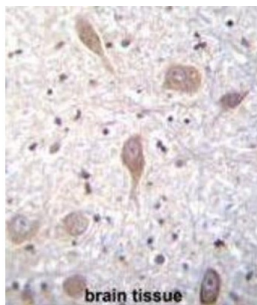


VSGP / F-spondin Antibody

Catalogue No.: abx026795



Cell adhesion protein that promotes the attachment of spinal cord and sensory neuron cells and the outgrowth of neurites in vitro. May contribute to the growth and guidance of axons in both the spinal cord and the PNS (By similarity). Major factor for vascular smooth muscle cell.

Target: VSGP/F-spondin

Clonality: Polyclonal

Reactivity: Human, Mouse

Tested Applications: ELISA, WB, IHC

Host: Rabbit

Recommended dilutions: WB: 1/1000, IHC-P: 1/10 - 1/50. Not tested in IHC-F. Optimal dilutions/concentrations should be determined by the end user.

Conjugation: Unconjugated

Immunogen: KLH-conjugated synthetic peptide between 15-43 amino acids from the N-terminal region of human VSGP/F-spondin.

Isotype: IgG

Form: Liquid

Datasheet

Version: 3.0.0

Revision date: 17 Sep 2025



Purification:	Purified through a protein A column, followed by peptide affinity purification.
Storage:	Aliquot and store at -20°C. Avoid repeated freeze/thaw cycles.
UniProt Primary AC:	Q9HCB6 (UniProt , ExPASy)
String:	9606.ENSP00000460236
Molecular Weight:	Calculated MW: 91 kDa
Buffer:	PBS containing 0.09% sodium azide.
Specificity:	Predicted to react with Cow SPON1.
Note:	THIS PRODUCT IS FOR RESEARCH USE ONLY. NOT FOR USE IN DIAGNOSTIC, THERAPEUTIC OR COSMETIC PROCEDURES. NOT FOR HUMAN OR ANIMAL CONSUMPTION.

For Reference Only