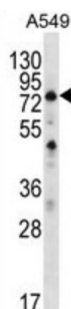


Spermatogenesis Associated 7 (SPATA7) Antibody

Catalogue No.: abx026799



This gene, originally isolated from testis, is also expressed in retina. Mutations in this gene are associated with Leber congenital amaurosis and juvenile retinitis pigmentosa. Alternatively spliced transcript variants encoding different isoforms have been found for this gene.

Target: Spermatogenesis Associated 7 (SPATA7)

Clonality: Polyclonal

Reactivity: Human

Tested Applications: ELISA, WB

Host: Rabbit

Recommended dilutions: WB: 1/1000. Optimal dilutions/concentrations should be determined by the end user.

Conjugation: Unconjugated

Immunogen: KLH-conjugated synthetic peptide between 374-401 amino acids from the C-terminal region of human SPATA7.

Isotype: IgG

Form: Liquid

Purification: Purified through a protein A column, followed by peptide affinity purification.

Storage: Aliquot and store at -20°C. Avoid repeated freeze/thaw cycles.

UniProt Primary AC: Q9P0W8 ([UniProt](#), [ExPASy](#))

Gene Symbol: SPATA7

Datasheet

Version: 4.0.0

Revision date: 11 Sep 2025



String: [9606.ENSPO0000377176](#)

Molecular Weight: Calculated MW: 67.7 kDa

Buffer: PBS containing 0.09% sodium azide.

Note: THIS PRODUCT IS FOR RESEARCH USE ONLY. NOT FOR USE IN DIAGNOSTIC, THERAPEUTIC OR COSMETIC PROCEDURES. NOT FOR HUMAN OR ANIMAL CONSUMPTION.

For Reference Only