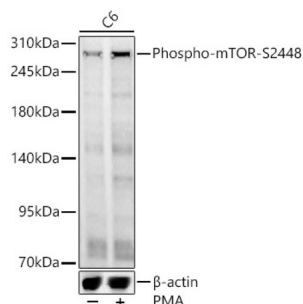
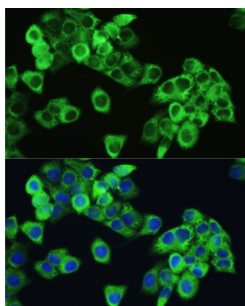


MTOR (pS2448) Antibody

Catalogue No.: abx000164



Western blot analysis of lysates from C6 cells, using Phospho-mTOR-S2448 Antibody at 1/1000 dilution. C6 cells were treated by PMA/TPA (200 nM) at 37 °C for 30 minutes after serum-starvation overnight. Secondary antibody: HRP-conjugated Goat anti-Rabbit IgG (H+L) at 1/10000 dilution. Lysates/proteins: 25 µg per lane. Blocking buffer: 3% nonfat dry milk in TBST. Exposure time: 60s.



Immunofluorescence analysis of HeLa cells using Phospho-mTOR-S2448 Antibody at dilution of 1/100. Secondary antibody: Cy3-conjugated Goat anti-Rabbit IgG (H+L) at 1/500 dilution. Blue: DAPI for nuclear staining.

MTOR (pS2448) Antibody is a Rabbit Polyclonal antibody against MTOR (pS2448). The protein encoded by this gene belongs to a family of phosphatidylinositol kinase-related kinases. These kinases mediate cellular responses to stresses such as DNA damage and nutrient deprivation. This protein acts as the target for the cell-cycle arrest and immunosuppressive effects of the FKBP12-rapamycin complex. The ANGPTL7 gene is located in an intron of this gene.

Target: MTOR (pS2448)

Clonality: Polyclonal

Reactivity: Human, Mouse, Rat

Tested Applications: ELISA, WB, IF/ICC

Host: Rabbit

Recommended dilutions: ELISA: 1 µg/ml, WB: 1/500 - 1/1000, IF/ICC: 1/50 - 1/200. Optimal dilutions/concentrations should be determined by the end user.

Conjugation: Unconjugated

Immunogen: A synthetic phosphorylated peptide around S2448 of human mTOR.

Isotype: IgG

Form: Liquid

Datasheet

Version: 4.0.0
Revision date: 07 Jun 2025



Purification:	Purified by affinity chromatography.
Storage:	Aliquot and store at -20°C. Avoid repeated freeze/thaw cycles.
UniProt Primary AC:	P42345 (UniProt , ExPASy)
Gene Symbol:	MTOR
GeneID:	2475
NCBI Accession:	NP_004949.1
KEGG:	hsa:2475
String:	9606.ENSP00000354558
Molecular Weight:	Calculated MW: 289 kDa Observed MW: 289 kDa
Buffer:	PBS, pH 7.3, containing 0.09% sodium azide, 50% glycerol.
Concentration:	> 0.2 mg/ml
Note:	THIS PRODUCT IS FOR RESEARCH USE ONLY. NOT FOR USE IN DIAGNOSTIC, THERAPEUTIC OR COSMETIC PROCEDURES. NOT FOR HUMAN OR ANIMAL CONSUMPTION.