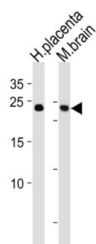
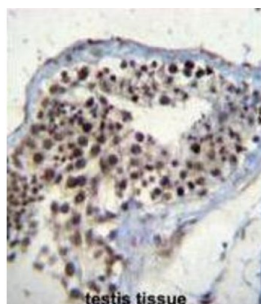


## Sex Determining Region Y Box Protein 15 (SOX15) Antibody

Catalogue No.: abx026837



This gene encodes a member of the SOX (SRY-related HMG-box) family of transcription factors involved in the regulation of embryonic development and in the determination of the cell fate. The encoded protein may act as a transcriptional regulator after forming a protein complex with other proteins. [provided by RefSeq].

<b>Target:</b>	Sex Determining Region Y Box Protein 15 (SOX15)
<b>Clonality:</b>	Polyclonal
<b>Reactivity:</b>	Human, Mouse
<b>Tested Applications:</b>	ELISA, WB, IHC
<b>Host:</b>	Rabbit
<b>Recommended dilutions:</b>	WB: 1/1000, IHC-P: 1/10 - 1/50. Not tested in IHC-F. Optimal dilutions/concentrations should be determined by the end user.
<b>Conjugation:</b>	Unconjugated
<b>Immunogen:</b>	KLH-conjugated synthetic peptide between 96-125 amino acids from the Central region of human SOX15.
<b>Isotype:</b>	IgG
<b>Form:</b>	Liquid

# Datasheet

Version: 3.0.0  
Revision date: 05 Mar 2025



<b>Purification:</b>	Purified through a protein A column, followed by peptide affinity purification.
<b>Storage:</b>	Aliquot and store at -20°C. Avoid repeated freeze/thaw cycles.
<b>UniProt Primary AC:</b>	O60248 ( <a href="#">UniProt</a> , <a href="#">ExPASy</a> )
<b>Gene Symbol:</b>	SOX15
<b>NCBI Accession:</b>	NP_008873.1
<b>KEGG:</b>	hsa:6665
<b>String:</b>	<a href="#">9606.ENSP00000355354</a>
<b>Molecular Weight:</b>	Calculated MW: 25.3 kDa
<b>Buffer:</b>	PBS containing 0.09% sodium azide.
<b>Note:</b>	THIS PRODUCT IS FOR RESEARCH USE ONLY. NOT FOR USE IN DIAGNOSTIC, THERAPEUTIC OR COSMETIC PROCEDURES. NOT FOR HUMAN OR ANIMAL CONSUMPTION.

For Reference Only