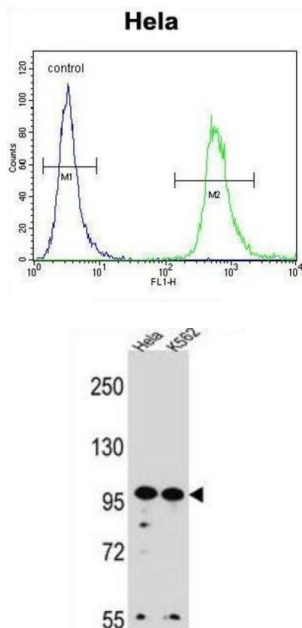


WD Repeat-Containing Protein 3 (WDR3) Antibody

Catalogue No.: abx026865



This gene encodes a nuclear protein containing 10 WD repeats. WD repeats are approximately 30 to 40-amino acid domains containing several conserved residues, which usually include a trp-asp at the C-terminal end. Proteins belonging to the WD repeat family are involved in a variety of cellular processes, including cell cycle progression, signal transduction, apoptosis, and gene regulation.

Target: WD Repeat-Containing Protein 3 (WDR3)

Clonality: Polyclonal

Reactivity: Human

Tested Applications: ELISA, WB, FCM

Host: Rabbit

Recommended dilutions: WB: 1/1000, FCM: 1/10 - 1/50. Optimal dilutions/concentrations should be determined by the end user.

Conjugation: Unconjugated

Immunogen: KLH-conjugated synthetic peptide between 208-236 amino acids from the N-terminal region of human WDR3.

Isotype: IgG

Datasheet

Version: 3.0.0

Revision date: 02 May 2025



Form:	Liquid
Purification:	Purified through a protein A column, followed by peptide affinity purification.
Storage:	Aliquot and store at -20°C. Avoid repeated freeze/thaw cycles.
UniProt Primary AC:	Q9UNX4 (UniProt , ExPASy)
Gene Symbol:	WDR3
String:	9606.ENSP00000308179
Molecular Weight:	Calculated MW: 106 kDa
Buffer:	PBS containing 0.09% sodium azide.
Note:	THIS PRODUCT IS FOR RESEARCH USE ONLY. NOT FOR USE IN DIAGNOSTIC, THERAPEUTIC OR COSMETIC PROCEDURES. NOT FOR HUMAN OR ANIMAL CONSUMPTION.

For Reference Only