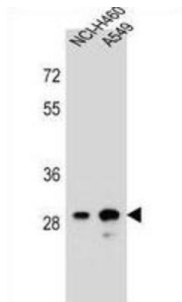


Putative Dehydrogenase/reductase SDR Family Member 4-Like 1 (DHRS4L1) Antibody

Catalogue No.: abx026870



DHRS4L1 putative oxidoreductase (By similarity).

Target:	Putative Dehydrogenase/reductase SDR Family Member 4-Like 1 (DHRS4L1)
Clonality:	Polyclonal
Reactivity:	Human
Tested Applications:	ELISA, WB
Host:	Rabbit
Recommended dilutions:	WB: 1/1000. Optimal dilutions/concentrations should be determined by the end user.
Conjugation:	Unconjugated
Immunogen:	KLH-conjugated synthetic peptide between 222-250 amino acids from the C-terminal region of human DHRS4L1.
Isotype:	IgG
Form:	Liquid
Purification:	Purified through a protein A column, followed by peptide affinity purification.
Storage:	Aliquot and store at -20°C. Avoid repeated freeze/thaw cycles.
UniProt Primary AC:	P0CG22 (UniProt , ExPASy)
Molecular Weight:	Calculated MW: 30.6 kDa

Datasheet

Version: 2.0.0

Revision date: 25 May 2025



Buffer: PBS containing 0.09% sodium azide.

Note: THIS PRODUCT IS FOR RESEARCH USE ONLY. NOT FOR USE IN DIAGNOSTIC, THERAPEUTIC OR COSMETIC PROCEDURES. NOT FOR HUMAN OR ANIMAL CONSUMPTION.

For Reference Only