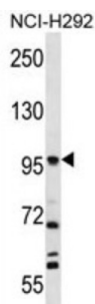


## Prolyl Endopeptidase FAP (FAP) Antibody

Catalogue No.: abx026875



The protein encoded by this gene is a homodimeric integral membrane gelatinase belonging to the serine protease family. It is selectively expressed in reactive stromal fibroblasts of epithelial cancers, granulation tissue of healing wounds, and malignant cells of bone and soft tissue sarcomas. This protein is thought to be involved in the control of fibroblast growth or epithelial-mesenchymal interactions during development, tissue repair, and epithelial carcinogenesis.

**Target:** Prolyl Endopeptidase FAP (FAP)

**Clonality:** Polyclonal

**Reactivity:** Human

**Tested Applications:** ELISA, WB

**Host:** Rabbit

**Recommended dilutions:** WB: 1/1000. Optimal dilutions/concentrations should be determined by the end user.

**Conjugation:** Unconjugated

**Immunogen:** Human the protein of human FAP.

**Isotype:** IgG

**Form:** Liquid

**Purification:** Purified through a protein A column, eluted with high and low pH buffers and neutralized immediately, followed by dialysis against PBS.

**Storage:** Aliquot and store at -20°C. Avoid repeated freeze/thaw cycles.

**UniProt Primary AC:** Q12884 ([UniProt](#), [ExPASy](#))

**Molecular Weight:** Calculated MW: 87.7 kDa

# Datasheet

Version: 2.0.0

Revision date: 06 Jun 2025



**Buffer:** PBS containing 0.09% sodium azide.

**Note:** THIS PRODUCT IS FOR RESEARCH USE ONLY. NOT FOR USE IN DIAGNOSTIC, THERAPEUTIC OR COSMETIC PROCEDURES. NOT FOR HUMAN OR ANIMAL CONSUMPTION.

For Reference Only