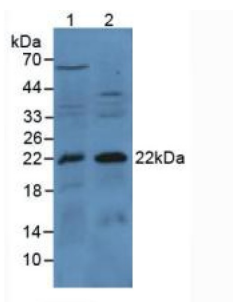
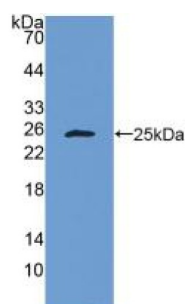


## Bcl2 Associated X Protein (BAX) Antibody

Catalogue No.: abx130707



Western blot analysis of (1) Mouse Kidney Tissue and (2) Mouse Lung Tissue.



Western blot analysis of recombinant Human Bax.

Bcl2 Associated X Protein Antibody is a Rabbit Polyclonal against Bcl2 Associated X Protein.

**Target:** Bcl2 Associated X Protein (BAX)

**Clonality:** Polyclonal

**Reactivity:** Human

**Tested Applications:** WB, IHC, IF/ICC

**Host:** Rabbit

**Recommended dilutions:** WB: 0.01-2 µg/ml, IHC: 5-20 µg/ml, IF/ICC: 5-20 µg/ml. Optimal dilutions/concentrations should be determined by the end user.

**Conjugation:** Unconjugated

**Immunogen:** Met1-Gly192

**Form:** Liquid

**Purification:** Purified by antigen-specific affinity chromatography, followed by Protein A affinity chromatography.

**Storage:** Aliquot and store at -20°C. Avoid repeated freeze/thaw cycles.

# Datasheet

Version: 2.0.0

Revision date: 07 Oct 2025



**UniProt Primary AC:** Q07812 ([UniProt](#), [ExPASy](#))

**Buffer:** 0.01 M PBS, pH 7.4, containing 0.05% Proclin-300, 50% glycerol.

**Concentration:** 1 mg/ml

**Note:** THIS PRODUCT IS FOR RESEARCH USE ONLY. NOT FOR USE IN DIAGNOSTIC, THERAPEUTIC OR COSMETIC PROCEDURES. NOT FOR HUMAN OR ANIMAL CONSUMPTION.

For Reference Only