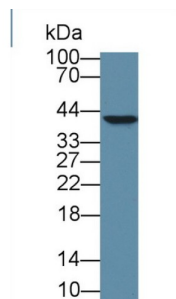
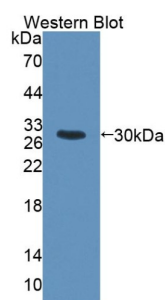


SWI/SNF-Related Matrix-Associated Actin-Dependent Regulator of Chromatin Subfamily E Member 1-Related (HMG20B) Antibody

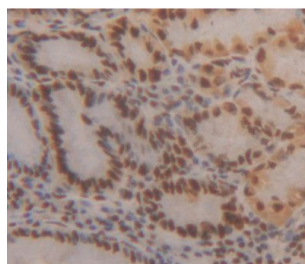
Catalogue No.: abx130729



Western blot analysis of Human Jurkat cell lysate, using Human HMG20B Antibody (1 µg/ml) and HRP-conjugated Goat Anti-Rabbit antibody ([abx400043](#), 0.2 µg/ml).



Western blot analysis of the recombinant protein.



IHC-P analysis of stomach tissue, with DAB staining.

SWI/SNF-Related Matrix-Associated Actin-Dependent Regulator of Chromatin Subfamily E Member 1-Related Antibody is a Rabbit Polyclonal against SWI/SNF-Related Matrix-Associated Actin-Dependent Regulator of Chromatin Subfamily E Member 1-Related.

Target:	SWI/SNF-Related Matrix-Associated Actin-Dependent Regulator of Chromatin Subfamily E Member 1-Related (HMG20B)
Clonality:	Polyclonal
Reactivity:	Human
Tested Applications:	WB, IHC, IF/ICC
Host:	Rabbit

Datasheet

Version: 2.0.0
Revision date: 23 May 2025



Recommended dilutions: WB: 0.01-2 µg/ml, IHC: 5-20 µg/ml, IF/ICC: 5-20 µg/ml. Optimal dilutions/concentrations should be determined by the end user.

Conjugation: Unconjugated

Immunogen: HMG20B (Val27-Phe213)

Form: Liquid

Purification: Purified by antigen-specific affinity chromatography, followed by Protein A affinity chromatography.

Storage: Aliquot and store at -20°C. Avoid repeated freeze/thaw cycles.

UniProt Primary AC: Q9P0W2 ([UniProt](#), [ExPASy](#))

Gene Symbol: HMG20B

GeneID: [10362](#)

OMIM: [605535](#)

HGNC: 5002

KEGG: hsa:10362

Ensembl: ENSG00000064961

String: [9606.ENSP00000328269](#)

Buffer: 0.01 M PBS, pH 7.4, containing 0.05% Proclin-300, 50% glycerol.

Note: THIS PRODUCT IS FOR RESEARCH USE ONLY. NOT FOR USE IN DIAGNOSTIC, THERAPEUTIC OR COSMETIC PROCEDURES. NOT FOR HUMAN OR ANIMAL CONSUMPTION.