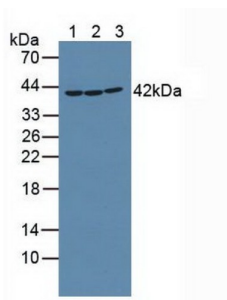
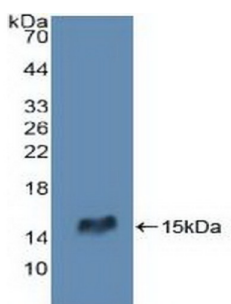


Receptor Interacting Serine Threonine Kinase 2 (RIPK2) Antibody

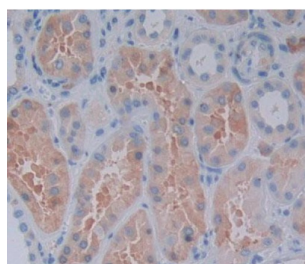
Catalogue No.: abx130791



Western blot analysis of (1) Mouse Placenta Tissue, (2) Rat Placenta Tissue and (3) Human K562 Cells.



Western blot analysis of recombinant Human RIPK2.



IHC-P analysis of Kidney tissue, with DAB staining.

RIPK2 Antibody is a Rabbit Polyclonal against RIPK2.

Target: Receptor Interacting Serine Threonine Kinase 2 (RIPK2)

Clonality: Polyclonal

Reactivity: Human

Tested Applications: WB, IHC, IF/ICC

Host: Rabbit

Recommended dilutions: WB: 1-5 µg/ml, IHC: 5-20 µg/ml, IF/ICC: 5-20 µg/ml. Optimal dilutions/concentrations should be determined by the end user.

Conjugation: Unconjugated

Datasheet

Version: 2.0.0

Revision date: 26 Aug 2025



Immunogen:	RIPK2 (Gln432-Met540)
Form:	Liquid
Purification:	Purified by antigen-specific affinity chromatography, followed by Protein A affinity chromatography.
Storage:	Aliquot and store at -20°C. Avoid repeated freeze/thaw cycles.
Buffer:	0.01 M PBS, pH 7.4, containing 0.05% Proclin-300, 50% glycerol.
Note:	THIS PRODUCT IS FOR RESEARCH USE ONLY. NOT FOR USE IN DIAGNOSTIC, THERAPEUTIC OR COSMETIC PROCEDURES. NOT FOR HUMAN OR ANIMAL CONSUMPTION.

For Reference Only